



Built by the  
**KEYSTONE** MANUFACTURING COMPANY BOSTON, MASS., U.S.



# KEYSTONE

## PACKARD MOTOR CAR COMPANY

DETROIT MICHIGAN

May 2, 1926

Keystone Manufacturing Company  
288 A Street  
Boston, Massachusetts

Gentlemen:

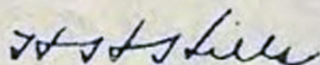
The toy Packard truck that you have sent us is indeed a fine piece of work. You have shown skill as a toy designer and you have built well.

These toys will go to many boys whose fathers have fleets of Packard trucks, and to many more who ride in Packard cars as a part of their daily life. How proud they will be of this closer contact with a thing they have come to know so favorably.

We wish you success in marketing the toy, and we wish the boy owners joy in their possession.

Very sincerely,

PACKARD MOTOR CAR COMPANY

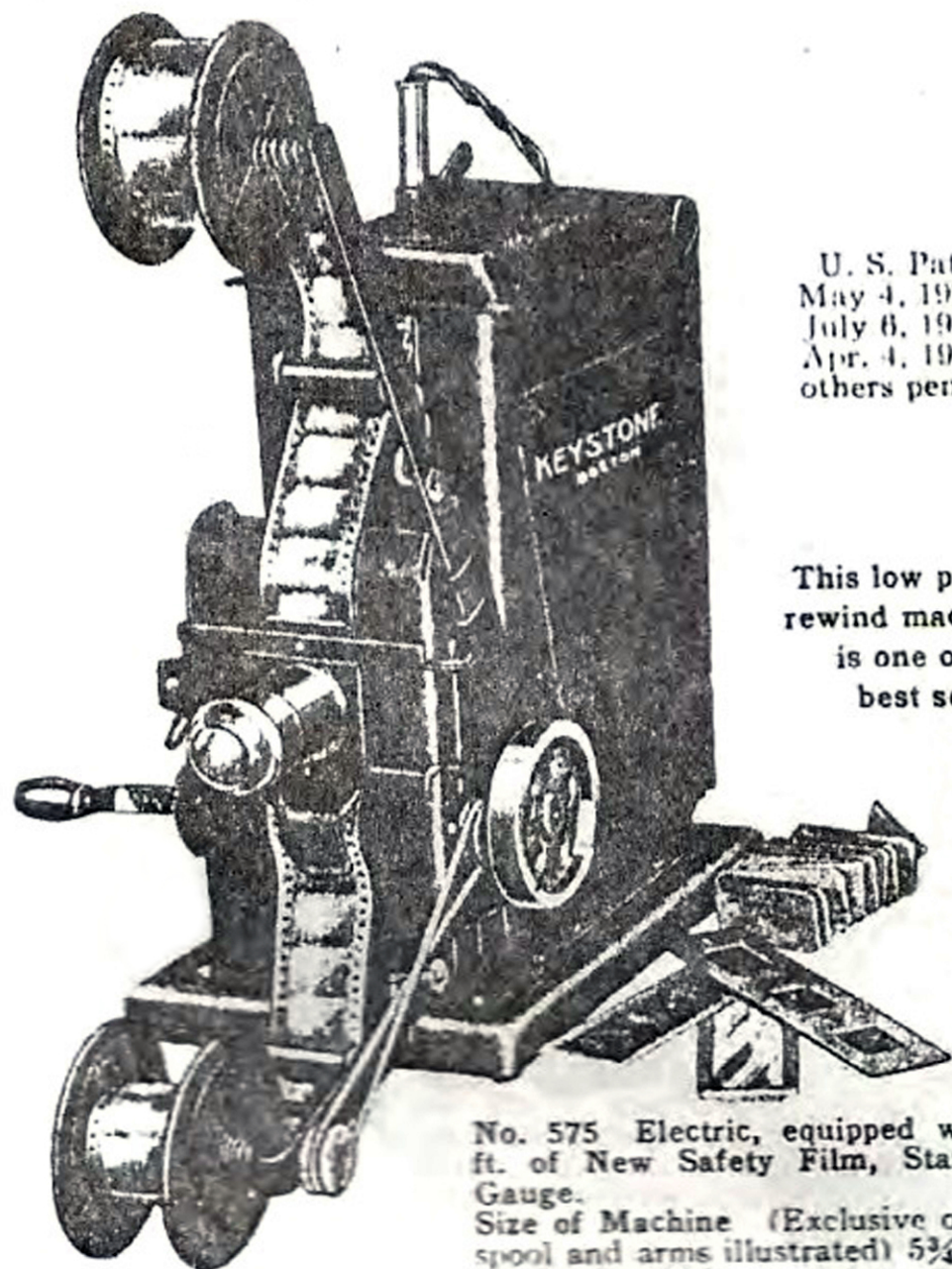


H. H. Hills  
Vice President of Distribution



# KEYSTONE MOVIEGRAPH—

# SHOWS REAL MOVIES



U. S. Patents  
May 4, 1920  
July 8, 1920  
Apr. 4, 1922  
others pending.

This low priced  
rewind machine  
is one of our  
best sellers

No. 575 Electric, equipped with 4  
ft. of New Safety Film, Standard  
Gauge.

Size of Machine (Exclusive of film  
spool and arms illustrated) 5 $\frac{3}{4}$  in. x  
9 $\frac{1}{4}$  in. x 11 $\frac{1}{4}$  in.

**Additional Equipment** Socket and six feet of cord with plug.  
One Compartment Slide, one Colored Slide, one U-Draw-Em  
Slide, supply of tickets, bill posters, operator's badge and officer's  
and ticket takers' badges, ushers' arm bands and a sheet of simple  
instructions.

**Construction** Steel. Painted black of a high grade crystal  
finish. Base has rubber tips so that it will not scratch furniture.

**Size of Picture** 36 inches x 48 inches. The larger the bulb  
the further back from the wall the machine can be placed, resulting  
in a larger picture.

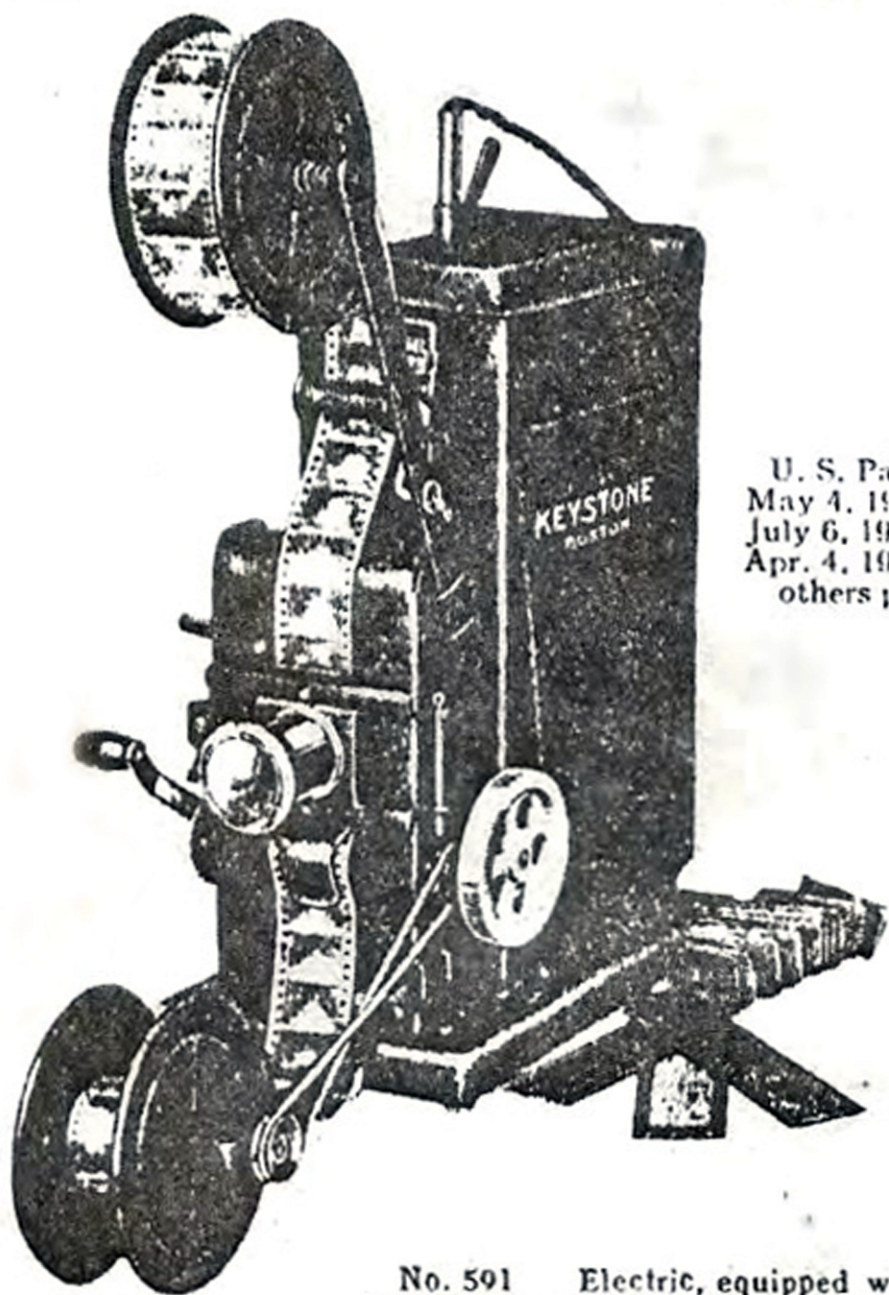
The above model can also be had for Dry Cell Batteries. Be  
sure to specify the number and whether for Electric or Dry cell.  
Electric models furnished unless otherwise specified. Batteries  
not furnished with dry cell machines.

**Weight** Packed each in a strong box complete, 6 $\frac{3}{4}$  pounds.



# KEYSTONE MOVIEGRAPH—

# REAL FUN AT HOME



U. S. Patents  
May 4, 1920  
July 6, 1920  
Apr. 4, 1922  
others pending

**No. 591** Electric, equipped with 6 ft.  
Brand New Safety Film, Standard Gauge.

**Size of Machine** 5 $\frac{3}{4}$  in. x 9 $\frac{1}{4}$  in. x 12 $\frac{5}{8}$  in.  
Exclusive of spools and arms illustrated.

**Equipment** Six feet of cord, plug and socket, one compartment slide, one colored slide, one U-Draw-Em slide, generous supply of tickets, bill posters, officers' badges, operators' and ticket takers' badges, ushers' arm bands, and a sheet of simple instructions.

**Construction** Steel, Leather pattern, baked crystalized enamel finish. Nickel trimmings. Base has rubber tips so it will not scratch furniture.

**Size of picture** 38 inches x 50 inches. Any ordinary Electric bulb can be used, the larger the bulb the further back from the wall the machine can be placed, resulting in a larger picture.

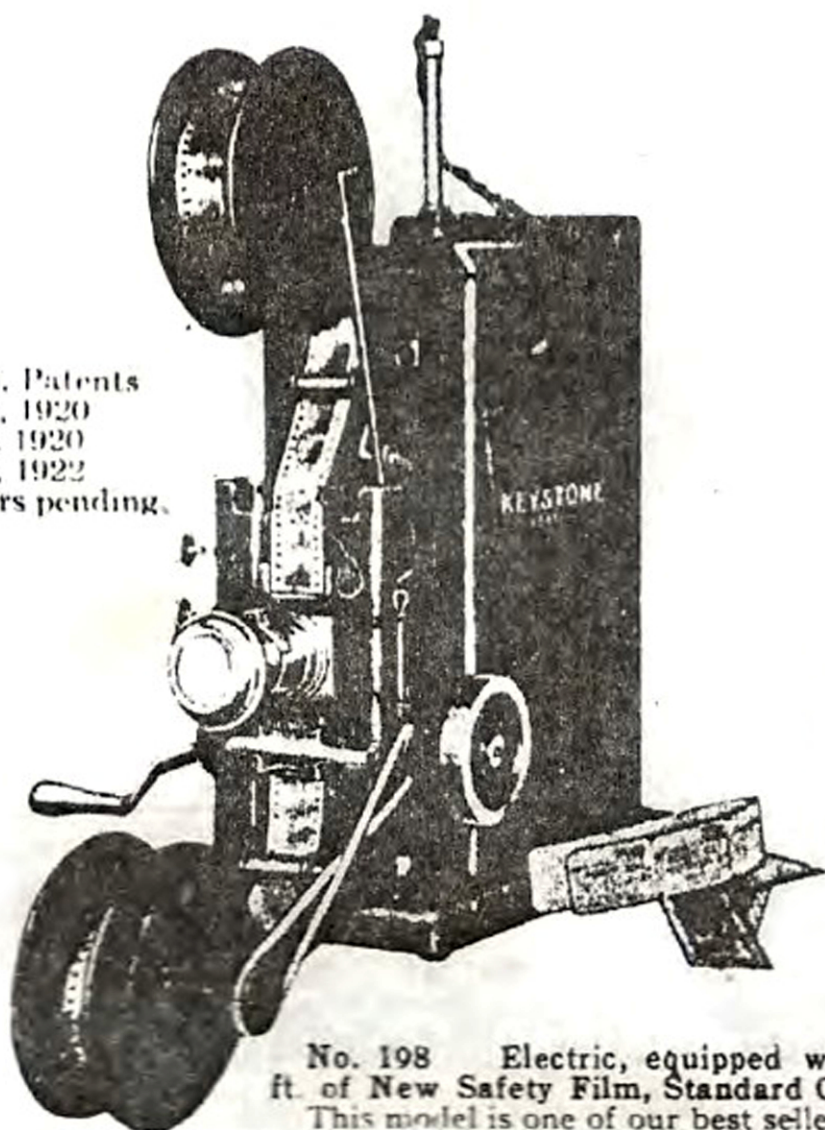
**Weight** Packed each in a strong box complete, 7 $\frac{3}{4}$  lbs.

**Retail Price, \$7.50**



# KEYSTONE MOVIEGRAPH— FOR BOYS AND GIRLS

U. S. Patents  
May 4, 1920  
July 6, 1920  
Apr. 4, 1922  
others pending.



**No. 198** Electric, equipped with 10 ft. of New Safety Film, Standard Gauge. This model is one of our best sellers.  
Size of Machine 6 $\frac{1}{4}$  in. x 10 $\frac{3}{4}$  in. x 13 $\frac{1}{2}$  in.

Exclusive of spools and arms illustrated.

**Additional Equipment** Adjuster for electric bulb, including six feet of cord, plug and socket, one compartment slide, one U-Draw-Em slide, two colored slides, generous supply of tickets, bill posters, officers' badges, operators' and ticket takers' badges, ushers' arm bands, and a sheet of simple instructions.

**Construction** Steel. Leather pattern, baked crystalized enamel finish Nickel trimmings. Base has rubber tabs on the bottom so that it will not scratch the furniture.

**Size of Picture** 45 inches x 60 inches. Any size bulb can be used up to 150 watt, the larger the bulb the further back from the wall the machine can be placed, resulting in a larger picture.

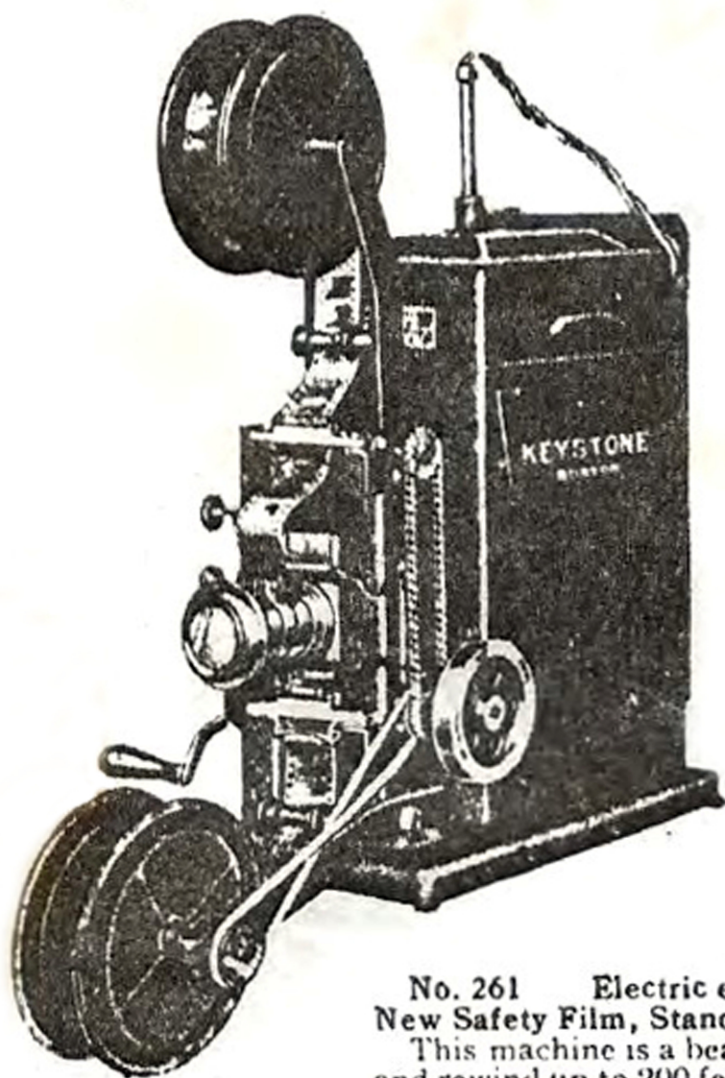
The above model can also be had for Dry Cell Batteries. Be sure to specify the number and whether for Electric or Dry Cell. Electric models furnished unless otherwise specified. Batteries not furnished with dry cell machines.

**Weight** Packed each in a strong box complete, 10 lbs.

**Retail Price, \$10.00**



KEYSTONE FURNISHED with  
MOVIEGRAPH— SAFETY FILM



U. S. Patents  
May 4, 1920  
July 6, 1920  
Apr. 4, 1922  
others pending

**No. 261 Electric equipped with 10 ft  
New Safety Film, Standard Gauge.**

This machine is a beauty, it will unwind and rewind up to 200 feet of film. The re-wind attachments are easy to assemble. Adjustable to any size electric lamp.

**Size of Machine** 6 $\frac{3}{4}$  in. x 10 $\frac{3}{4}$  in. x 13 $\frac{5}{8}$  in.

Exclusive of spools and arms illustrated.

**Equipment** Extra large lens tube, with lens adjusting mechanism, and three powerful lenses, including lens. Highly polished reflector. One Compartment Slide, U-Draw-Em Slide, three Colored Slides, 100 theatre tickets, generous supply of bill posters, officers' badges, also ticket takers' and operators' badges, ushers' arm bands and sheet of simple instructions.

**Construction** Steel. Leather pattern, baked crystalized enamel finish. Nickel trimmings. Adjuster for lens. With rubber tabs on bottom so that it will not scratch furniture. Has re-wind pulleys. Polished fly wheel. Sprocket barrel with rollers, so that film will not come off or tear.

**Size of Picture** 60 in. x 72 in. Any ordinary Electric bulb can be used, the larger the bulb the further back from the wall the machine can be placed, resulting in a larger picture.

**Weight** Packed each in a strong box complete, 10 $\frac{1}{2}$  lbs.

**Retail Price, \$15.00**



# KEYSTONE EQUIPPED with MOVIEGRAPH — FILM CATALOG

U. S. Patents  
May 4, 1920  
July 6, 1920  
Apr. 4, 1922  
others pending



**No. 147 Electric, equipped with 10 ft. New Safety Film, Standard Gauge.**

The lenses are extra large. The lens tube is large and highly polished and very elaborate, with special lens adjusting mechanism. Has advance feed.

**Size of Machine** 6 $\frac{3}{4}$  in. x 13 $\frac{3}{4}$  in. x 13 $\frac{1}{2}$  in.

Exclusive of spools and arms illustrated.

**Equipment** Three imported lenses, double convex and 2 $\frac{1}{2}$ -in. condensing lens. Highly polished reflector. One compartment slide, one U-Draw-Em slide, six colored slides, one hundred theatre tickets, generous supply of bill posters, officer's badge, ticket takers' and operators' badges, ushers' arm bands and simple directions.

**Construction** Steel. Leather pattern baked crystalized enamel finish, Nickel trimmings, adjuster for lens, wooden base with rubber tabs on the bottom so that it will not scratch the furniture. Has advance feed and rewind pulleys. Polished fly wheel. Sprocket barrel with rollers so that film will not come off or tear.

**Size of Picture** 84 inches x 96 inches. Any ordinary Electric bulb can be used, the larger the bulb and the further back from the wall the machine is placed the larger the picture.

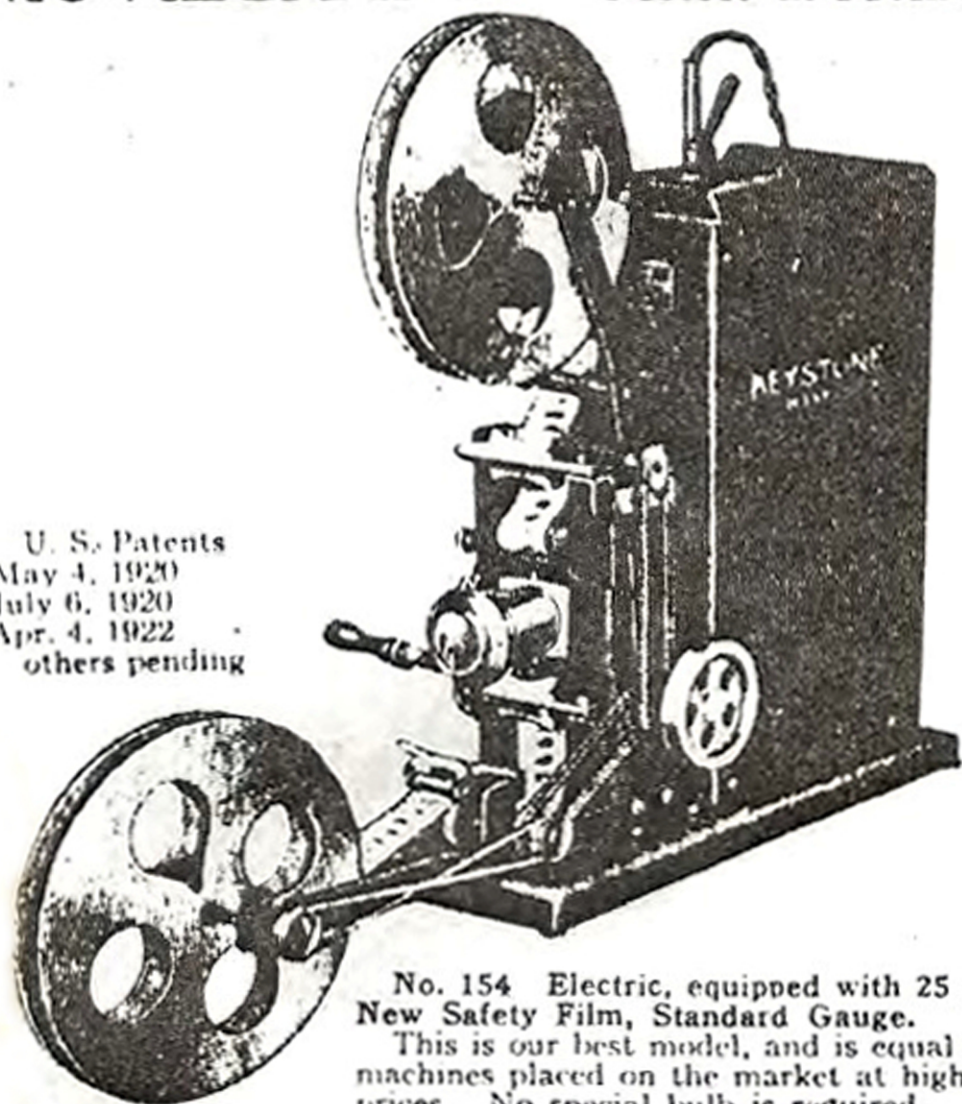
**Weight** Packed each in a strong box complete, 10 $\frac{1}{2}$  lbs.

**Retail Price, \$20.00**



KEYSTONE Can Show Favorite  
MOVIEGRAPH-- Actors at Home

U. S. Patents  
May 4, 1920  
July 6, 1920  
Apr. 4, 1922  
others pending



No. 154 Electric, equipped with 25 ft. New Safety Film, Standard Gauge.

This is our best model, and is equal to machines placed on the market at higher prices. No special bulb is required.

This machine is equipped with three sprocket barrels, an advance sprocket, a driving sprocket, and also a take-up sprocket, releasing all tension of the film. The lenses are extra large and are adjustable.

The reel arms are a stationary part of the machine and need not be assembled. All parts are highly polished.

**Size of Machine** 6 $\frac{3}{4}$  in. x 13 $\frac{3}{4}$  in. x 14 $\frac{1}{2}$  in.

Exclusive of spools and arms illustrated.

**Equipment** Three high power French lenses, double convex, and 2 $\frac{1}{2}$ -in. condensing lens. Adjustable, highly polished reflector. One compartment slide, six colored slides, one U-Draw Em slide. One hundred theatre tickets, generous supply of bill posters, officer's badge, ticket takers' and operators' badges, ushers' arm bands and simplified directions.

**Construction** Steel. Leather pattern baked crystallized enamel finish, geared adjuster for lens, rubber tabs on the bottom so that it will not scratch the furniture. Has advance feed and rewind pulleys. Polished fly wheel. Sprocket barrel with rollers so that film will not come off or tear.

**Size of Picture** 81 inches x 96 inches. Any ordinary Electric bulb can be used, the larger the bulb the further back from the wall the machine can be placed, resulting in a larger picture.

**Weight** Packed each in a strong box complete, 12 lbs.

**Retail Price, \$25.00**



## KEYSTONE KOMEDIES

### Standard Gauge NEW NON-INFLAMMABLE FILM

This film is Non-Inflammable. These films are especially printed in our own Film Laboratories for the **Keystone Movie-graph**. Each of the films on this page is brand new. Just as much action is crowded in each length as is possible to print. Each subject is definite and complete. This is standard Gauge Film 1 3/8 inches wide.

### 10-FOOT LENGTHS—SAFETY FILMS 90c EACH

- 305 Charlie Chaplin—Up and Down Stairs
- 306 Charlie Chaplin—Trouble with Waiter
- 307 Charlie Chaplin—Charlie as the Maid
- 450 Jackie Coogan—Feeding the Pig
- 451 Jackie Coogan—Fun in the Barn
- 337 Ben Turpin—The Dog Catcher
- 338 Wm. S. Hart—The Gambler's Den
- 339 Wm. S. Hart—Charging the Enemy
- 349 Tom Mix—The Attack
- 350 Tom Mix—Following the Trail
- 351 Tom Mix—The Rustlers
- 359 Comedy—Fatty the Golfer
- 801 Gump Comedies—Sandy with the Stage Manager
- 802 Gump Comedies—Sandy and His Mother-in-Law

### 25-FOOT—SAFETY FILMS \$2.00 PER REEL

- 362 Charlie Chaplin—Caught with the Goods
- 363 Charlie Chaplin—Working the Trap
- 364 Charlie Chaplin—On the Fire Engine
- 408 Douglas Fairbanks—Fighting Against Odds
- 373 Wm. S. Hart—Himself
- 374 Wm. S. Hart—A Western Fight
- 377 Tom Mix—The Roundup
- 378 Tom Mix—Wounded
- 464 Jackie Coogan—Taking a Bath
- 465 Jackie Coogan—Milking the Cow
- 825 Gump Comedies—Sandy as an Actor

### 50-FOOT—SAFETY FILMS \$4.00 PER REEL

- 379 Charlie Chaplin—Getting His Goat
- 380 Charlie Chaplin—Thirsty Charlie
- 409 Douglas Fairbanks—Fun in a Barber Shop
- 410 Douglas Fairbanks—Morning Exercise
- 383 Wm. S. Hart—Fighting the Outlaws
- 384 Wm. S. Hart—Chased by the Indians
- 469 Jackie Coogan—Helping the Cook
- 403 Tom Mix—In the Movies
- 830 Gump Comedies—Sandy as a Model Husband

### 100-FOOT—SAFETY FILMS \$8.00 PER REEL

- 389 Charlie Chaplin—Free Samples at the Drug Store
- 390 Charlie Chaplin—The Fireman
- 394 Wm. S. Hart—Rescuing the Girl
- 472 Jackie Coogan—Making Spaghetti
- 396 Tom Mix—Breaking Out of Jail
- 406 Tom Mix—A Thrilling Moment
- 411 Douglas Fairbanks—A Struggle for Life
- 840 Gump Comedies—Sandy in a Turkey Chase

**WRITE FOR A COMPLETE CATALOGUE**



# KEYSTONE



*Color Post-Cards  
Snap Shots Abroad  
Bible Pictures  
Scenic Views*



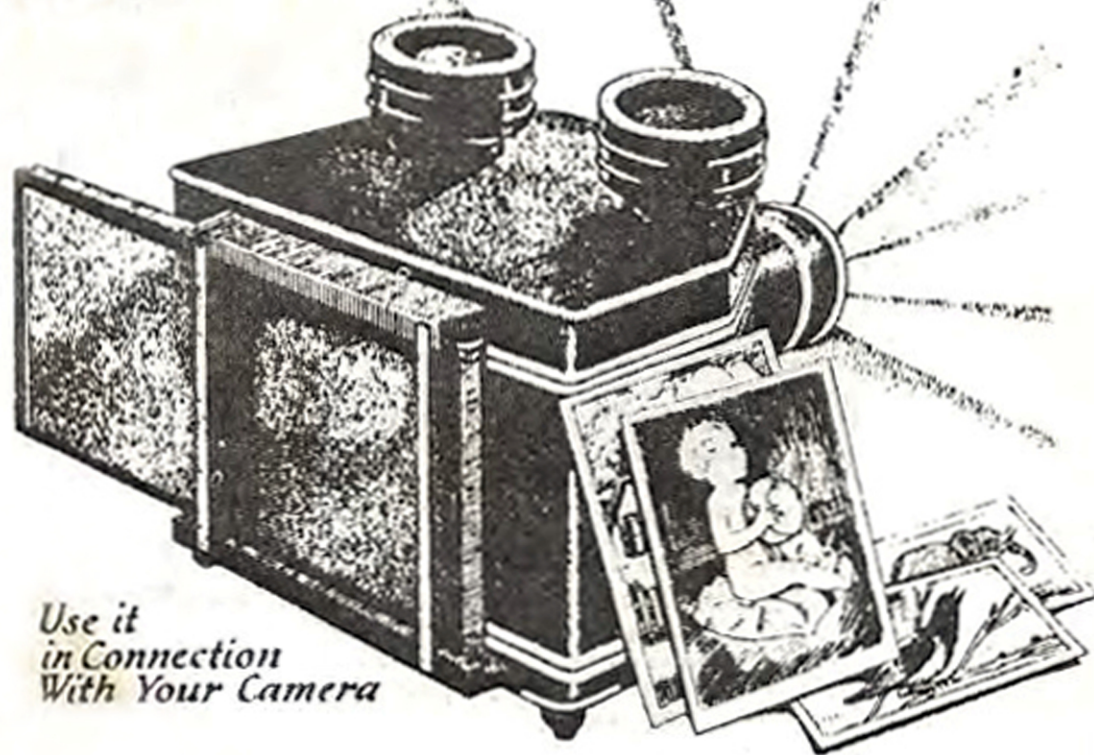
*Vacation Snap Shots  
Old Time Pictures  
Family Groups  
Babies*

*Retail*

*\$5.00*

*\$10.00*

*\$15.00*



*Use it  
in Connection  
With Your Camera*



# KEYSTONE



*Daily Newspaper Comics  
Sunday Color Comics  
Valentines  
Cartoons  
Songs*

*Machines  
Road Maps  
Commercial Work*

*Birds  
Flowers  
Famous People  
Scenes  
and Enlargements*

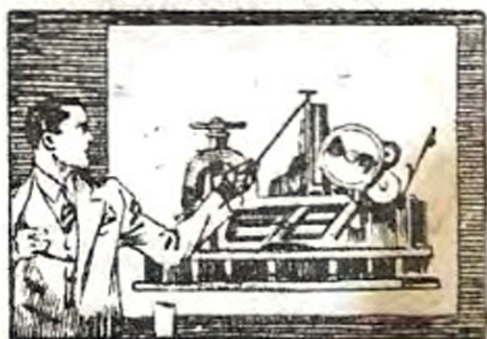
*Shadows  
Guessing Games  
Illustrated Songs  
Story Book Pictures*

## KEYSTONE RADIOPTICAN

MADE IN BOSTON, U.S.A.

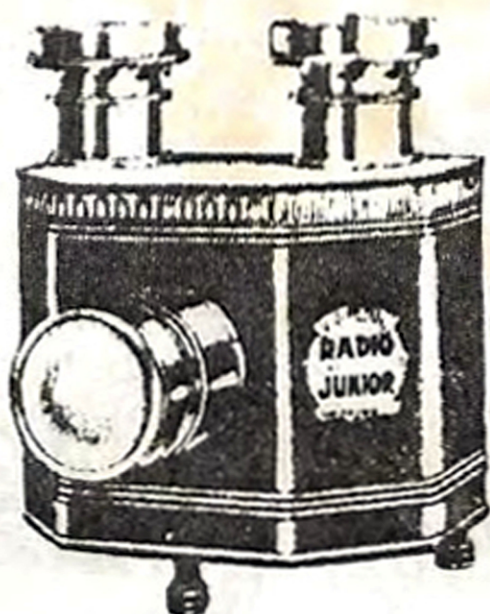
*Entertaining-Educational  
Any Picture  
Any Color*

*Any Time or Anywhere  
there is an Electric Socket*





# KEYSTONE



No. 401—RADIO-JUNIOR

Price, \$5.00

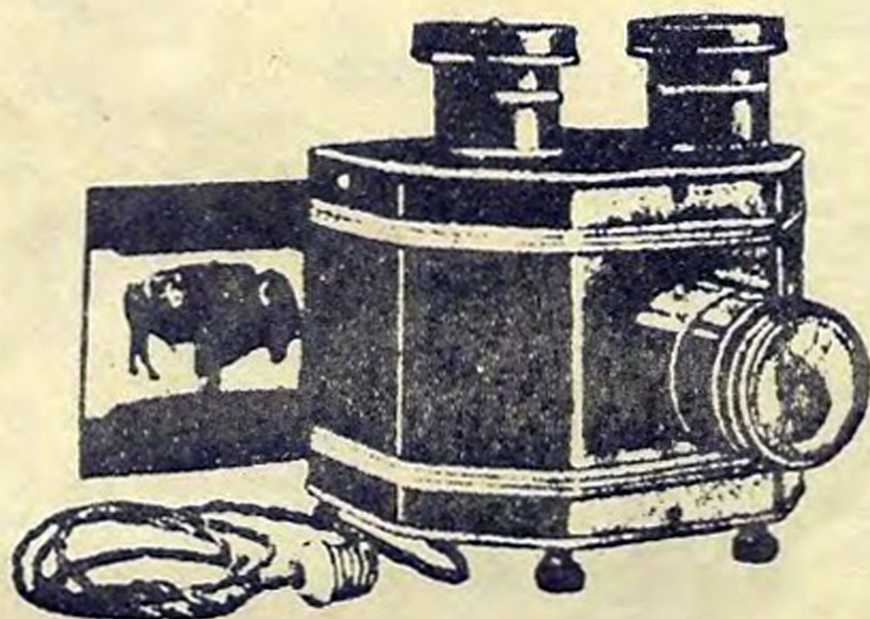
EQUIPPED with 3-inch double convex ground and polished lens, two ventilators to keep the housing cool, electric cord plug, sockets for two bulbs and with reflectors inside body. It is strikingly finished in baked green crystal enamel.

Size Length 9½ in., width 9 in., height 11 in.





# KEYSTONE



No. 421 -RADIOPTICON

Price, \$10.00

**B**ECAUSE of its superior lenses, illuminants and reflectors this model yields a sharper and brighter picture.

**Lens System** Double Plano-Convex Lens System covering sharply pictures.

**Illumination** Fitted with large parabolic reflectors and 6 ft. of cord for attaching to any electric light fixture.

**Picture Holders** Two holders for standard post cards, etc. are mounted on detachable sliding backs (patented) eliminating delay between subjects and preventing light being let into room when loading.

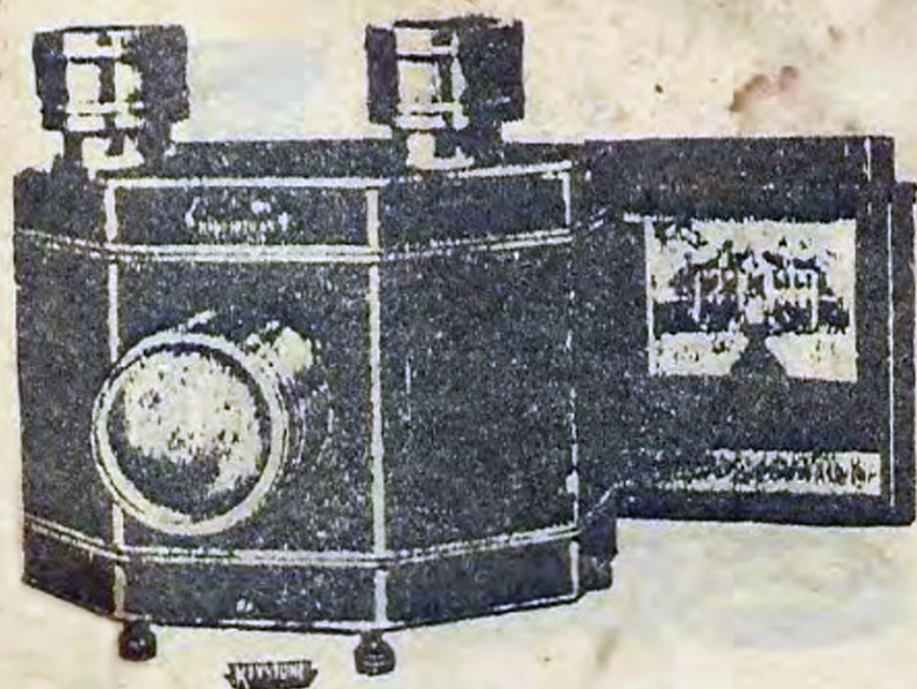
**Cooling Arrangements** Thoroughly ventilated and protected with air spaces.

**Finish** Highly crystalized baked black finish.

**Size** Length, 11 in.; width,  $11\frac{3}{4}$  in.; height,  $11\frac{3}{4}$  in.



# KEYSTONE



No. 431—RADIOPTICON

Retail Price, \$15.00

**T**HE illumination in this model is double that of No. 421 and it has the distinct advantage of a sliding carrier for detachable backs, patented adjustable picture holders and minor refinements such as light-tight ventilators.

**Lens System** Double Plano-Convex Lens System covering prints and photographs up to  $6\frac{1}{2} \times 5\frac{1}{2}$  inches.

**Illumination** Extra large parabolic reflectors and 6 ft. of cord for attaching to any electric light fixture.

**Picture Holders** Two patented, adjustable holders mounted on metal plates which drop into a double sliding carrier, provide a picture changing system identical with the established standard of all high grade stereopticons. The adjustable holders receive pictures up to  $6\frac{1}{2} \times 5\frac{1}{2}$  inches either vertical or horizontal.

**Cooling Arrangements** Thoroughly ventilated and provided with air spaces.

**Finish** Highly crystalized baked black finish.