

10
RETURN TO MASTER FILE

CATALOGUE

Keystone

Toys

KEYSTONE MFG. CO.
BOSTON, MASS., U.S.A.

All quotations made by Keystone Manufacturing Co. are subject to change without notice and also subject to increase due to either Federal or State Legislation.

The prices on all unshipped orders will be subject to the increase caused by Federal or State Legislation.

Quotations are based upon the manufacturers cost existing under the Laws of June 1st, 1933.

Terms: 30 days net; less 2% if paid in 10 days from date of invoice.

All merchandise shipped F. O. B. Boston.

The return of merchandise is to be made only upon written permission from the Keystone Manufacturing Co.

Orders accepted subject to all contingencies beyond our control.



KEYSTONE MANUFACTURING COMPANY
288 A STREET - - BOSTON, MASSACHUSETTS

NEW YORK SHOWROOM - 200 FIFTH AVENUE



KEYSTONE HOME MOVIES

16-M.M. PROJECTORS



FOR FOURTEEN YEARS KEYSTONE MANUFACTURING COMPANY HAS LED THE FIELD OF ALL ITS COMPETITORS IN MARKETING A MOTION PICTURE MACHINE PRIMARILY FOR CHILDREN. IT IS NOW RECOGNIZED AS THE STANDARD LINE FOR THE JUNIOR MEMBERS OF THE FAMILY IN MANY COUNTRIES.

THE LINE THAT IS ILLUSTRATED ON THESE PAGES ALSO INCLUDES CAMERAS AND PROJECTORS PRIMARILY FOR THE ADULT MEMBER OF THE FAMILY, NAMELY, D62, B63, A74 PROJECTORS AND MODELS "A" AND "C" CAMERAS. A FILM CATALOGUE, SIMPLE INSTRUCTIONS, ELECTRIC BULB, AND A BROAD GUARANTEE IS FURNISHED WITH EACH OUTFIT.

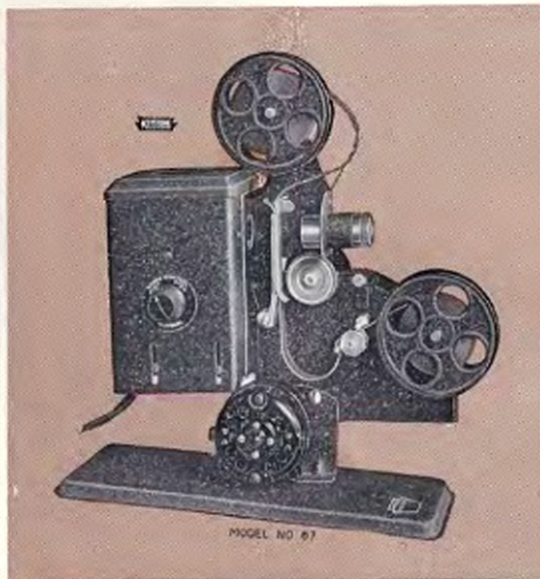
ALL THESE MACHINES USE 16-MILLIMETER FILM; THE SAME SIZE AS IS USED ON ALL HOME MOVIE EQUIPMENT SUCH AS EASTMAN AND OTHER POPULAR MAKES. FILMS TAKEN ON ANY 16-MILLIMETER CAMERA MAY BE SHOWN ON ANY OF THESE PROJECTORS.

MODEL E-65 PROJECTOR

ILLUMINATION: Furnished by superlite projection lamp, bulb furnished with machine. **REFLECTOR:** Highly polished reflector. **LENS:** Double convex Projection type. **CONSTRUCTION:** Steel lamp house and base; attractive baked crystal enamel finish. **REEL CAPACITY:** 100 foot; two empty spools furnished with machine. **SIMPLE THREADING:** Special aperture plate. **VENTILATION:** From the rear. **ANGLE OF PROJECTION:** By a swivel between base and body any angle can be obtained. **SIZE OF PICTURE:** Up to 20" x 26" at a distance of 10 feet; smaller pictures at shorter distances.

MODEL E-67 PROJECTOR

Same in general construction as the E-65. Equipped with Universal motor drive and speed regulator which permits the adjustment of the speed desired.

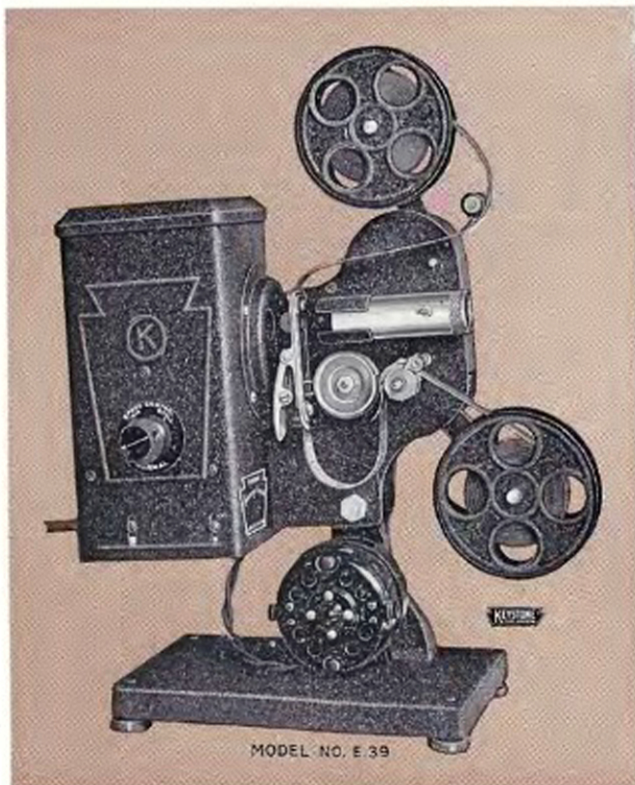


MODEL E-38 PROJECTOR

With professional type 3 blade shutter. **ILLUMINATION:** Furnished by superlite projection lamp; bulb furnished with machine. **REFLECTOR:** Highly polished reflector. **LENS:** 2 1/4" focus projection type. **CONSTRUCTION:** Steel lamp house; attractive baked crystal enamel finish; steel base with rubber tips to prevent scratching of furniture. **REEL CAPACITY:** 100 foot; two empty spools furnished with machine. **SIZE OF PICTURE:** Up to 20" x 26" at a distance of 10 feet; smaller pictures at shorter distances. **ANGLE OF PROJECTION:** By a swivel between base and body any angle can be obtained.

MODEL E-39 PROJECTOR

Same in general construction as Model E-38. Equipped with Universal motor drive and speed regulator which permits the adjustment of the speed desired.



LISTED AND APPROVED BY
UNDERWRITERS LABORATORIES



KEYSTONE HOME MOVIES

GUARANTEED MACHINES



LISTED AND APPROVED BY
UNDERWRITERS LABORATORIES

MODEL D-62 PROJECTOR . . . \$25.00

ILLUMINATION: Furnished with 6-volt double concentrated filament 32-candlepower bulb connected in series, giving a total of 64-candlepower, connected with transformer. This model for alternating current only. Direct current machines specially furnished on request without extra cost. **LENS:** 2 1/4" focus plano-convex projection type, highly ground and polished, accurately set in lens tube. **CONSTRUCTION:** Cast aluminum alloy body with steel base; attractive baked crystal enamel finish with rubber tips at bottom. **FRAMER:** Automatic—requires no adjustment. **REEL CAPACITY:** 400 foot; two 400 foot empty spools furnished with machine. **SIMPLE THREADING:** Special aperture plate and lever controlled by one finger. **REWIND GEAR:** Equipped with high speed rewind gear and pinion. **PRECISION:** Precision film motion by two claw movement with grip on two sprocket holes instead of one. **ADVANCED FEED:** Has advanced feed sprocket and take-up loops. **ANGLE PROJECTION:** By swivel between base and body any angle may be obtained. **SIZE OF PICTURE:** Up to 20" x 26" at a distance of about 15 feet; smaller pictures at shorter distances. **VENTILATION:** Perforated lamp house top with light deflector. **MOTOR DRIVE:** Heavy duty motor and speed regulator which permits the adjustment of the speed desired.

MODEL E-42 PROJECTOR

With professional type 3 blade shutter. **ILLUMINATION:** Furnished by superlite projection lamp; illumination bulb furnished with machine. Highly polished reflector. **LENS:** 2 1/4" focus projection type. **CONSTRUCTION:** Steel lamp house; attractive baked enamel finish; steel base with rubber tips at bottom to prevent scratching of furniture. **REEL CAPACITY:** 400-foot. Two 400-foot empty spools furnished with machine. **REWIND GEAR:** Equipped with high speed rewind gear. **ADVANCE FEED:** This model is equipped with advance feed sprocket which tends to give improved projection same as professional projectors. **ANGLE PROJECTION:** By a swivel between base and body any angle can be obtained. **SIZE OF PICTURE:** Up to 20" x 26" at a distance of about 10 feet; smaller pictures at shorter distances.

MODEL E-53 PROJECTOR WITH MOTOR

Same in general construction as Model E-42. Equipped with Universal motor drive and speed regulator which permits the adjustment of the speed desired.

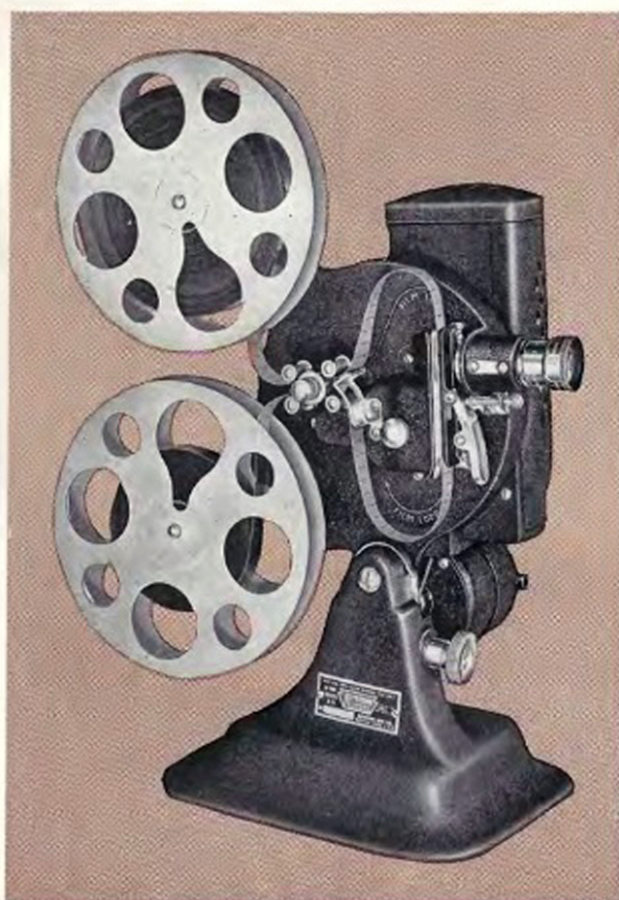


LISTED AND APPROVED BY
UNDERWRITERS LABORATORIES



KEYSTONE HOME MOVIES

MODELS ON THIS PAGE PRIMARILY FOR ADULT USE



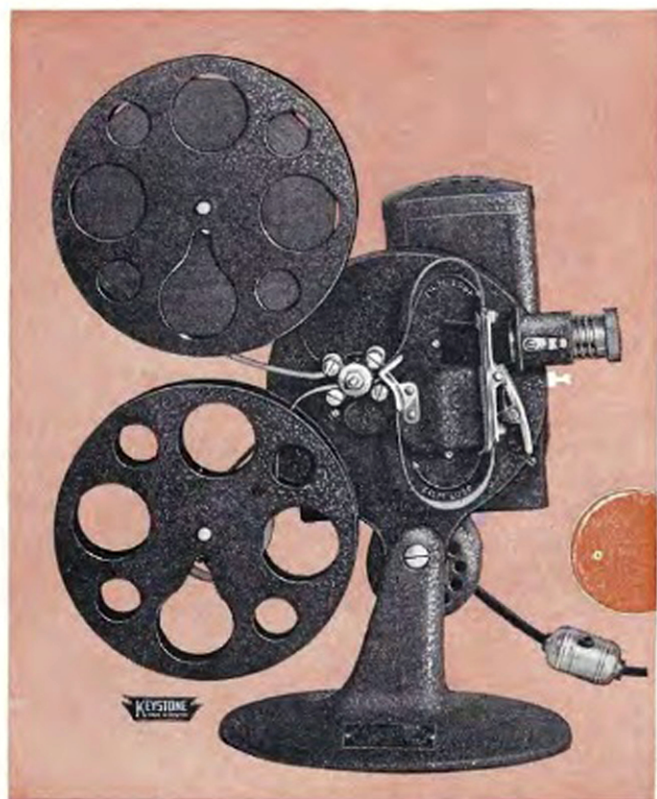
LISTED AND APPROVED BY
UNDERWRITERS LABORATORIES

MODEL A-74 PROJECTOR . . . \$50.00

Equipped with 300 watt special concentrated filament pre-focus projection lamp. A ventilating fan is connected to motor which forces cool air through lamphouse, thereby cooling lamphouse and mechanism. **UNIVERSAL MOTOR DRIVE:** For Direct Current or Alternating Current (special rheostat for controlling speed). **LENS:** 2" focal length, fully achromatic; same lens system as used on very high priced machines. **REFLECTOR:** Polished and ground, high quality silver reflector which increases illumination. **CONSTRUCTION:** Cast aluminum alloy main body construction with cast iron base. Baked brown wrinkle enamel finish. **FRAMER:** Automatic—requires no adjustment. **CAPACITY:** 400 foot; one empty aluminum spool furnished. **SIMPLE THREADING:** Special aperture plate and lever controlled by one finger. **PRECISION MOTION MOVEMENT:** By two claw movement with grip on two sprocket holes instead of one. **ANGLE PROJECTION:** By turning a knob on the base any angle can be obtained. **SIZE OF PICTURE:** UP to 40" x 52" at a distance of about 24 feet. **RE-WIND MECHANISM:** High-speed rewind gearing arrangement with crank handle. **GUIDE FOR FILM THREADING:** Designed in cast body. **OILING SYSTEM:** At all important friction points. **STILL PICTURES:** Equipped with automatic fire door for still pictures preventing scorching of the film.

MODEL B-63 PROJECTOR . . . \$31.50

ILLUMINATION: 100 watt special concentrated filament pre-focus projection lamp. **UNIVERSAL MOTOR DRIVE:** for direct or alternating current (special rheostat for controlling speed and stop). **LENS:** Projection type, semi-achromatic, finely ground and polished. **CONSTRUCTION:** Cast aluminum alloy main body construction with cast iron base to decrease vibration. Baked black crystal enamel finish. **FRAMER:** Automatic—requires no adjustment. **CAPACITY:** 400 foot; one empty aluminum spool furnished. **SIMPLE THREADING:** Special aperture plate and lever controlled by one finger. **PRECISION MOTION MOVEMENT:** By two claw movement with grip on two sprocket holes. **ANGLE PROJECTION:** By a swivel between base and body any angle can be obtained. **SIZE OF PICTURE:** Up to 30" x 38" at a distance of about 24 feet. **REWINDING MECHANISM:** High speed gearing arrangement with crank handle. **VENTILATION:** Perforated top. **GUIDE FOR FILM THREADING:** Designed in cast body. **OILING SYSTEM:** At all important friction points.



LISTED AND APPROVED BY
UNDERWRITERS LABORATORIES



KEYSTONE HOME MOVIES

16 M.M. FILMS FOR PROJECTORS



10-FOOT LENGTHS



Charlie Chaplin — Charlie's Dream

CHARLIE CHAPLIN—10 Ft.

- 16366—Charlie Chaplin—The Rescue
- 16368—Charlie Chaplin—Charlie's Dream
- 16369—Charlie Chaplin—Saving Charlie
- 16372—Charlie Chaplin—Having Fun

CARTOON COMEDY—10 Ft.

- 21101—Krazy Kat—Beamed with a Brick
- 21102—Bobby Bumps—Chased by the Sultan
- 21103—Jerry on the Job—The Cat Drops Out

MICKEY MOUSE—10 Ft.

- 876-X—Mickey Fails
- 877-X—Mickey's Cat
- 878-X—Hot Feet
- 879-X—Mickey's Lunch
- 880-X—Mickey's Bite
- 881-X—Mickey's Rival

WESTERN—10 Ft.

- 16373—Wm. S. Hart—Himself
- 16376—Wm. S. Hart—The Outlaw Chief
- 16416—Wm. S. Hart—Two Gun Bill
- 16417—Wm. S. Hart—A Capture and Escape
- 16418—Wm. S. Hart—Gun Practise—Closeup
- 14103—Tom Mix—On Tony
- 16400—Tom Mix—Attacking the Stage Coach
- 16401—Tom Mix—Behind the Scenes
- 14101—Douglas Fairbanks—Shooting the Card

MISCELLANEOUS—10 Ft.

- 16402—Lindbergh—And his Plane
- 14108—Admiral Byrd—Explorer
- 1576—Novelty—Snow-Plowing in the Alps
- 1575—Sports—Winning the Kentucky Derby

25-FOOT LENGTHS

ON SPOOL

CHARLIE CHAPLIN—25 Ft.

- 16389—Charlie Chaplin—Free Samples at the Drug Store
- 16392—Charlie Chaplin—Making Friends
- 14201—Charlie Chaplin—The Baker's Boy
- 14202—Charlie Chaplin—Thrown for a Loss

MICKEY MOUSE—25 Ft.

- 851-Y—Mickey the Janitor
- 852-Y—Mickey's Big Bust
- 853-Y—Mickey's Terrible Tune
- 854-Y—Mickey the Pilot
- 855-Y—Mickey's Hand Organ
- 856-Y—Kitchen Mechanic Mickey



Wm. S. Hart

WESTERN—25 Ft.

- 16394—Wm. S. Hart—Rescuing the Girl
- 16406—Tom Mix—A Thrilling Movement
- 1629—Tom Mix—Fire Cracker Kid
- 1649—Tom Mix—The Escape
- 14204—Tom Mix—With his Rifle
- 33201—Tom Mix—The Fight
- 14203—Douglas Fairbanks—Shooting

ACTION PICTURES—25 Ft.

- 1551—The Third Alarm
- 1552—Revolution in Santo Domingo
- 1553—Attacking the Balloon



Jerry On The Job

CARTON COMEDY—25 Ft.

- 31101—Krazy Kat—Held for Ransom
- 31102—Krazy Kat—Going Krazy
- 31103—Happy Hooligan—Getting the Goods
- 31104—Bobby Bumps—Up in Smoke
- 31105—Bobby Bumps—In a Harem
- 31106—Jerry on the Job—Hard Times
- 31107—Jerry on the Job—Dry Fishing
- 1550—Billy the Goat—"Whoopie"

NOVELTY—25 Ft.

- 1557—The Performing Cats
- 1558—Circus Elephants Perform
- 1559—Monkey-land
- 1561—Miss America Beauty Pageant

SPORTS—25 Ft.

- 1565—Winter Sports on Mt. Rainier
- 1566—Dog Sled Race
- 1567—The Enterprise-American Cup Defender

MISCELLANEOUS—25 Ft.

- 1633—Lindbergh—Hats Off
- 1646—Admiral Byrd—Return from South Pole
- 1563—Scenic—Venice from the Sky



KEYSTONE HOME MOVIES

16 M.M. FILMS FOR PROJECTORS



50-FOOT LENGTHS ON METAL SPOOL

CHARLIE CHAPLIN—50 Ft.

- 14301—Charlie Chaplin—All Muddled Up
14302—Charlie Chaplin—A Knight at Court
1701—Charlie Chaplin—Skip the Puddles
1703—Charlie Chaplin—Ladies' Man



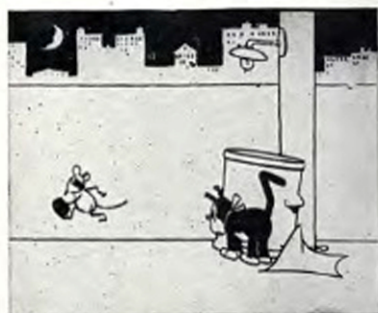
Charlie Chaplin

WESTERN—50 Ft.

- 14306—Tom Mix—Scaring the Indians
14303—Douglas Fairbanks—Out of a Trap
1523—Wild West—The Bronco Busters
14309—Wild West—Chased by Rustlers

MICKEY MOUSE—50 Ft.

- 826-Z—Mickey in Vaudeville
827-Z—Mickey's Buggy Ride
828-Z—Mickey's Blow Out
829-Z—Mickey Gets Caught
837-Z—Mickey's Swiss Tune
840-Z—Robinson Crusoe Mickey



Krazy Kat — The Great Cheese Robbery

CARTOON COMEDY—50 Ft.

- 1716—Jerry on the Job—The Candy Kid
1717—Jerry on the Job—The Tramps Escape
1718—Jerry on the Job—Kidnapped
1721—Krazy Kat—The Great Cheese Robbery
1722—Krazy Kat—Rescued by a Guilty Conscience
1723—Molly Mouse—The Tale of a Skunk
1515—The Foxy Farmer

100-FOOT LENGTHS ON METAL SPOOL

CHARLIE CHAPLIN—100 Ft.

- 1751—Charlie Chaplin—The Stolen Umbrella
52101—Charlie Chaplin—The Dentist
52102—Charlie Chaplin—Filling a Prescription
52103—Charlie Chaplin—Laughing Gas

WESTERN—100 Ft.

- 14402—Tom Mix—Ransomed
53201—Tom Mix—Life out West
14401—Douglas Fairbanks—Just in Time
14405—Wild West—A Western Escape

MICKEY MOUSE—100 Ft.

- 801-A—Mickey's Melodies and Mickey Loses Out
802-A—Dancing with Minnie and Steamboat Mickey
803-A—Mickey the Farmer and Mickey Tricks
804-A—Mickey Goes Wild and The Cats Away
805-A—Mickey Enlists and the Peanut Peddler
806-A—Mickey's Last Stand and Carnival Days
818-A—Mickey the Life Guard
819-A—Mickey the Fireman
820-A—Mickey's Busy Day
821-A—Mickey Out West
849-A—Mickey the Taxi Driver
850-A—Mickey's Troubles



Devil Dancers of Ceylon

TRAVELOGUES—100 Ft.

- 1801—Niagara Falls
1802—Cairo, Egypt
1803—Picturesque Japan
1804—Spain
1805—Turkey (Asia) and Constantinople
1806—Through Dauphine (France)
1807—Syria
1808—Ceylon—Devil Dancers and Buddas
1809—Milan (Italy)
1810—Ruins of Egypt
1811—Hong-Kong and Canton, China
1812—City of Algier
1813—Venice (Italy)



Bobby Bumps — Surf Rider

CARTOON COMEDY—100 Ft.

- 1760—Out of Inkwell—Tantalizing Fly
1766—Goodrich Dirt—Coin Collector
1767—Goodrich Dirt—Training Camp
1770—Hot Dog Series—Pete's Party
1771—Hot Dog Series—Jungle Belles
1772—Hot Dog Series—Dog Gone It
1773—Us Fellers—Dud, Circus Performer
1774—Us Fellers—Chip Off the Old Block
1775—Us Fellers—Lion Tamer
1776—Farmer Alfalfa—The Watermelon Patch
1777—Farmer Alfalfa—Revenge
1778—Judge Rummy—Joy Rider
1779—Judge Rummy—Turn to the Right Leg
1780—Happy Hooligan—Tale of Kangaroo
1781—Happy Hooligan—Spider and the Fly
1782—Jerry on the Job—Without Coal
1783—Jerry on the Job—Tale of a Wag
1784—Jerry on the Job—Bomb Idea
1785—Jerry on the Job—Cheating the Piper
1786—Jerry on the Job—Wrong Track
1787—Jerry on the Job—Mad Locomotive
1788—Jerry on the Job—Quick Change
1789—Bobby Bumps—Surf Rider
1790—Bobby Bumps—On the Doughnut Trail
1791—Krazy Kat—Family Affair
1792—Krazy Kat—Awful Spook
1793—Krazy Kat—Chinese Honeymoon
1794—Krazy Kat—Hindges on the Bar Room Floor
51201—Felix the Cat—Wedding Night

GANG COMEDIES—100 Ft.

- 1761—McDougall Alley—Big Pie Raid
1762—McDougall Alley—Oh Boy
1764—McDougall Alley—Present Arms

MISCELLANEOUS—100 Ft.

- 16178—Nature Study—The Birth of a Bean
16179—Nature Study—Marvels of a Trained Fly
16175—U. S. Navy—Air Fleet in Action
16176—U. S. Navy—Battleships Attack Enemy



KEYSTONE HOME MOVIES

ACCESSORIES FOR PROJECTORS—16 M.M.



NO. 734—KEYSTONE SPLICER



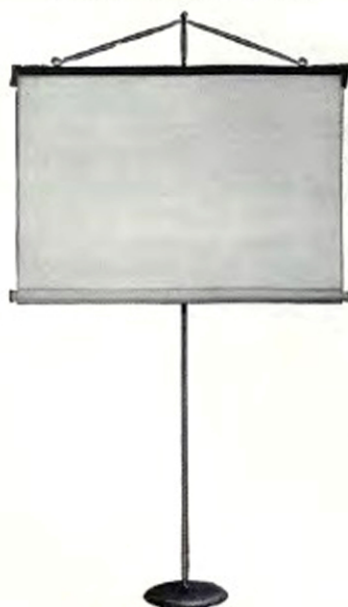
This handy splicer is designed to permit rapid, accurate joining of any 16-millimeter film.

With only a few simple operations you can secure absolutely accurate splices.

The entire splicer weighs but a few ounces and can be easily slipped into your pocket. The Keystone splicer can be conveniently carried with your projector so that you can make splices whenever necessary.

It is the work of only a few seconds to slip the film ends into the splicer where they are held in exactly the proper position for trimming and splicing.

No. 611 SCREEN SET



No. 611 Screen on Stand



Showing Screen Rolled Up In Case

The No. 611 Keystone Screen Set is made of heavy silver cloth on spring roller in a steel case. A metal stand, heavily weighted at the bottom for balance, is supplied with the set. The metal stand is adjustable to a height of five feet. The screen surface measures 30 inches x 24 inches. When not in use, and for transportation, the entire set can be made into a compact bundle.

No. 609—Screen without Stand. Same screen as 611 without stand.

No. 610 KEYSTONE BEADED SCREEN



Showing Screen erected and ready to use.

This excellent screen is ingeniously made into a one-piece folding unit that collapses into a small, compact, easily carried package. Besides a highly perfected projection surface, it has in addition unique self-erecting and self-closing features. The necessity of placing the vertical support by hand has been eliminated. The projection surface of this screen is composed of minute glass crystals, each a perfect sphere, spread to a velvet smoothness and embedded in a pure white composition field. The result is projected pictures which are



Showing screen closed for carrying or storing

brilliant and rich in tone, producing almost an effect of third dimension, yet soft and pleasing to the eye. The wooden carrying case in which the screen is built is finished in dark walnut with nickel trimmings and leather carrying handle. One pull lifts the screen up into position; to close, pull up the ring, at the same time pressing down with the wrist. The screen will gradually settle in its place in the case. Strongly constructed and bound to give splendid service.

The screen surface measures 30" x 40", and when closed for carrying purposes weighs 9 1/4 lbs.

MODEL E CARRYING CASE



This is a serviceable carrying case fabricated of leatherette, with wood locked corner construction, metal trimmings, leather handle and rubber tips. This case is so designed that any of our "E" Model Kinescopes can be conveniently carried in it. The back of the case serves as a screen on which you may project moving pictures. The screen material used is the standard aluminum color for projection purposes and will give excellent results.

No. 607 SCREEN

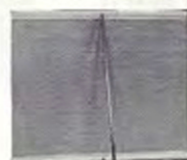
Keystone No. 607 Screen is made of heavy silvered cloth offering a superb reflective power. It comes equipped with a folding metal easel, which allows the screen to be placed in an upright position on a table or chair.



Front View

No. 607—Size 30" x 24" with metal easel.

No. 603—Size 21" x 16" with metal easel.



Rear View Showing Easel



Showing Screen Rolled Up

No. 613 SCREEN STAND

This is an all metal stand with an adjustable rod that can be raised to a height of five feet. The base is heavily weighted at the bottom for complete rigidity. The stand, when not in use, can be made into a compact bundle.

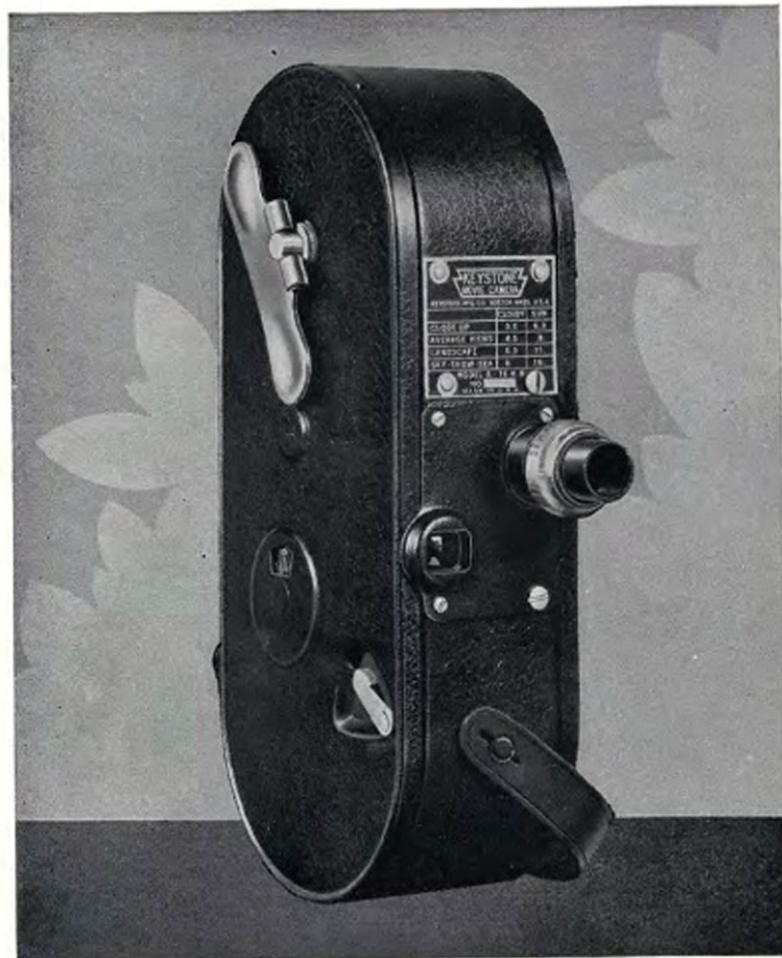




KEYSTONE HOME MOVIES



KEYSTONE MOVIE CAMERAS



HAND CRANK

MODEL C . . . Price \$12.50

CONVENIENT SIZE: $2\frac{3}{4}$ " thick x 9" high x 4" wide, with 1" lens extension. Symmetrical shape, making Camera easy to carry and permitting firm grip while operating. LIGHT WEIGHT. KEYSTONE "MODEL C" CAMERA weighs only 3 pounds. HIGH POWER LENS SYSTEM: Universal focus, with an adjustable mechanical iris for varied light conditions. The lenses are detachable for cleaning. PROFESSIONAL TYPE: Synchronized shutter geared for perfect timing. HAND CRANK: With free turning handle. MONOCULAR VIEWFINDER: Built right into the Camera. Enables you to see quickly and accurately the desired action or scene exactly as you want it to appear on the screen. FILM REGISTER: Automatically indicates the amount of film left after taking each scene. TRIPOD CONNECTION provided for. DAYLIGHT LOADING: Either the standard 100-foot or 50-foot reels can be used and the Camera can be safely loaded in broad daylight. PRECISION MOVEMENT: Finger type movement feeds film steadily and with hairline accuracy. DISTINCTIVE FINISH: Attractive black crystal enamel with bright trimmings. ACCESSORIES: Leather carrying cases, tripods, screens, screen stands, and complete projection equipment.

MODEL A—SPRING MOTOR WITH $f/3.5$ LENS Price \$35.00 WITH $f/1.5$ LENS Price \$67.50

CONVENIENT SIZE: $2\frac{3}{4}$ " thick x 9" long x 4" wide, with $1\frac{1}{2}$ " lens extension. Symmetrical shape, making Camera easy to carry and permitting firm grip while operating. LIGHT WEIGHT. $f/3.5$ LENS: universal focus with adjustable mechanical iris. This lens is fast and accurate, giving a sharp, true to life, picture. The $f/1.5$ lens is for ultra-rapid speed and is a standard Wollensak Ciné-Velostigmat lens—1" focus. MONOCULAR VIEWFINDER: Built right into Camera. Enables you to sight quickly and accurately the desired action or scene exactly as you want it to appear on the screen. TRIPOD CONNECTION provided for, but tripod is not necessary to obtain steady pictures. SPRING MOTOR: Designed to withstand severe use. Made of specially treated high grade spring steel. EASY WINDING: Winds very easily. Similar to winding a clock. Key is permanently attached to Camera and folds down out of the way when not in use. About 20 feet of film can be taken with each winding. CAPACITY: 100-foot, or 50-foot. DAYLIGHT LOADING: Camera may be safely loaded in broad daylight. FILM REGISTER: Automatically indicates the amount of film left after taking each scene. PATENTED AUDIBLE FILM FOOTAGE SIGNAL: At every two feet of film a sound like a faint bell is heard so that without removing camera from eye you will know the amount of film you are taking for a particular subject. PRECISION MOVEMENT: Finger type movement feeds film steadily and with hairline accuracy. DISTINCTIVE FINISH: Attractive black wrinkle enamel with highly polished chrome trimmings.



KEYSTONE RADIOPTICANS

FOR POSTCARDS, PHOTOGRAPHS, ETC.



No. 401 RADIOPTICAN



Price \$3.50

Equipped with 3-inch double convex ground and polished lens, two ventilators to keep the housing cool, electric cord plug, sockets for two bulbs and with reflectors inside body. It is strikingly finished in baked enamel.

SIZE. Length 9½ in., width 9 in., height 11 in.



Color Post Cards
Snap Shots Abroad
Bible Pictures
Scenic Views



Vacation Snap Shots
Old Time Pictures
Family Groups
Babies



Birds
Flowers
Famous People
Scenes
and Enlargements

**KEYSTONE
RADIOPTICAN**
MADE IN BOSTON, U.S.A.
Entertaining-Educational
Any Picture
Any Color
Any Time or Anywhere
there is an Electric Socket



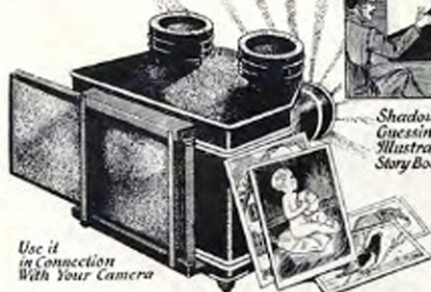
Daily Newspaper Comics
Sunday Color Comics
Valentines
Cartoons
Songs



Machines
Road Maps
Commercial Work



Shadows
Guessing Games
Illustrated Songs
Story Book Pictures



Use it
in Connection
With Your Camera

No. 411 RADIOPTICAN



Price \$5.00

Equipped with 3½-inch double convex ground and polished lens, two ventilators to keep the housing cool, two polished reflectors, electric cord plug, sockets for two bulbs inside body. It is strikingly finished in baked green crystal enamel.

SIZE. Length 9¾ in., width 11 in., height 12 in.



No. 431 RADIOPTICAN

Price \$12.50

The illumination in this model is double that of No. 421 and it has the distinct advantage of a sliding carrier for detachable backs, patented adjustable picture holders and minor refinements such as light-tight ventilators.

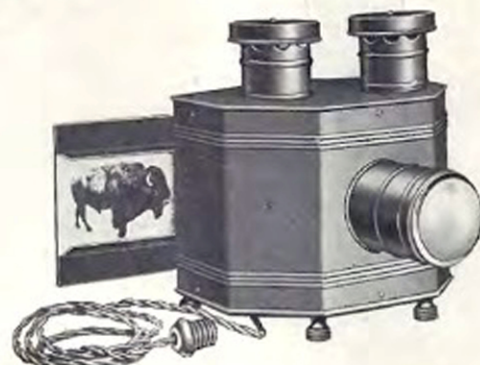
LENS SYSTEM. Double Plano-Convex Lens System covering prints and photographs up to 6½ x 5½ inches.

ILLUMINATION. Extra large parabolic reflectors and 6 ft. of cord for attaching to any electric light fixture.

PICTURE HOLDERS. Two patented, adjustable holders mounted on metal plates which drop into a double sliding carrier, provide a picture changing system identical with the established standard of all high grade stereopticons. The adjustable holders receive pictures up to 6½ x 5½ inches, either vertical or horizontal.

COOLING ARRANGEMENTS. Thoroughly ventilated and provided with air spaces.

FINISH. Highly crystalized baked black finish.



No. 421 RADIOPTICAN

Price \$8.50

Because of its superior lenses, illuminants and reflectors, this model yields a sharper and brighter picture.

LENS SYSTEM. Double Plano-Convex Lens System.

ILLUMINATION. Fitted with large parabolic reflectors and 6 ft. of cord for attaching to any electric light fixture.

PICTURE HOLDERS. Two holders for standard post cards, etc., are mounted on detachable sliding backs with adjustable holders for pictures up to 6½ inches x 5½ inches (patented) eliminating delay between subjects and preventing light being let into room when loading.

COOLING ARRANGEMENTS. Thoroughly ventilated and protected with air spaces.

FINISH. Highly crystalized baked black finish.

SIZE. Length 11 in., width 11¼ in., height 12¼ in.



KEYSTONE MANUFACTURING COMPANY

288 A STREET

BOSTON, MASS.

NEW YORK SHOWROOM

200 FIFTH AVENUE