

1938 - 1939 CATALOGUE

KEYSTONE

TOYS



KEYSTONE MFG. CO., BOSTON, MASS.

Mr. Dealer YOU WILL BENEFIT BY THE NATIONAL ADVERTISING
OF KEYSTONE CAMERAS AND PROJECTORS TO

20 Million People

EVERY FAMILY IN YOUR NEIGHBORHOOD READS ONE
OR MORE OF THE ELEVEN MAGAZINES LISTED BELOW

THE SATURDAY EVENING POST
An Illustrated Weekly
Founded & Edited by Benj. Franklin

The New York Times

Popular Photography
APRIL 1938
INTERVIEW

THIS WEEK
THE BOSTON HERALD
APRIL 25, 1938

Collier's
WEEKLY
APRIL 1, 1938
5¢ A COPY

Parents
CHILD REARING • FAMILY FUN • HOME DEVELOPMENT SECTION
APRIL 1938
25 CENTS

THE NATIONAL GEOGRAPHIC MAGAZINE
APRIL 1938
25 CENTS

TIME
The Weekly Newsmagazine
APRIL 1938

Liberty 5¢
WHAT I THINK OF ROBERT TAYLOR by Clark Gable
MURDER LADY by Whitman Chambers
IS DIMAGGIO BASEBALL'S WONDER
THE NEW FACE OF LIBERALISM

POPULAR MECHANICS
APRIL 1938
25 CENTS
SEE PAGE 687

KEYSTONE "8" mm
COLOR MOVIES
15¢ a Scene!

How dear TO YOUR HEART and EASY ON YOUR PURSE...

\$29.95
13.5 lens

KEYSTONE "8" mm
COLOR MOVIES

Start now to keep a living, full color record of the growth of the children. Take a moving picture of them every few months. The Keystone "8" with an F3.5 Wollensak lens is a precision built instrument of remarkable optical powers. This internationally famous movie camera makes pictures with perfect clarity and infinite detail in black and white or full color, using either Eastman or Economy Arta film. Sight through the finder, press the button, and your job as operator is done. The film is developed free of charge and returned to you prepared. Pictures may be taken in three speeds, normal, slow or stop motion. Keystone Mfg. Co. makes a complete range of moving picture cameras and projectors in both the 8 and 16 mm. Whether you choose the least expensive 8 mm. or the larger 16 mm. camera, there is no difference in precision workmanship, and all are light weight and smooth running. See your nearest Keystone dealer or write to us for complete information.

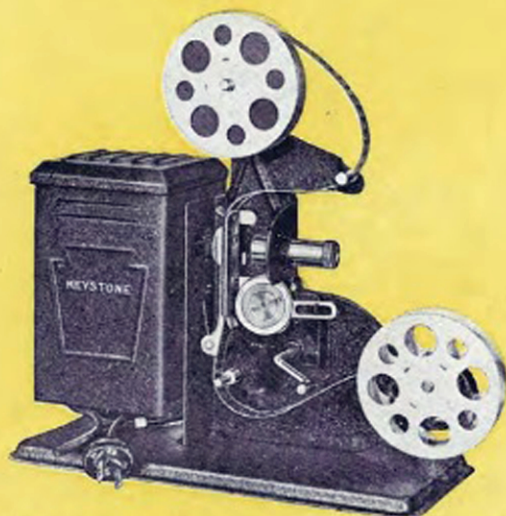
KEYSTONE MFG. CO., 250 A ST., BOSTON, MASS.

1938-1939 KEYSTONE PROJECTORS

The Keystone Juvenile Projector is the largest and oldest established line in the world, having originated more practical ideas in toy projectors for easy operation, and for accuracy of projection than any other line. Among the original ideas are:—

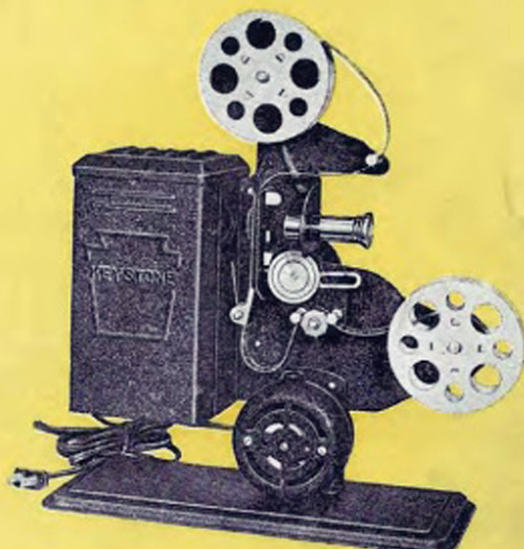
- 400-foot film capacity
- Covered gears
- The projection of light through color filters
- The built in speed control motor
- Angle projection
- Carrying handle
- Flared lens
- Framer
- The belt retainers to eliminate possible loss of belts
- Geared rewind to top spool
- Belt rewind to top spool

Many of these features are included in our projectors retailing up to \$72.50. Our research laboratory is maintained for continued improvements in Keystone Projectors.



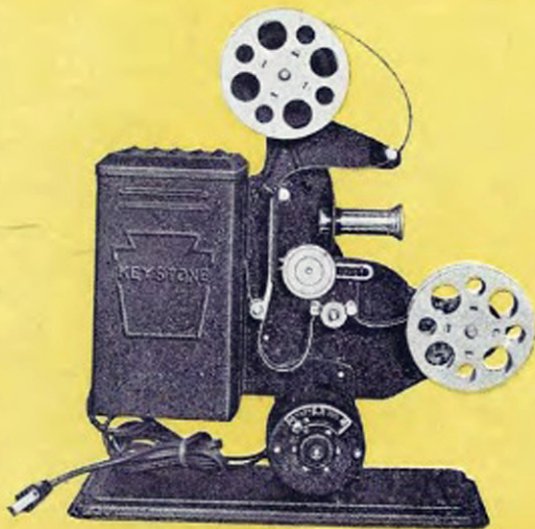
MODEL E-725 — Hand Crank —
100-foot Capacity — 16 M.M.

Hand crank; cord and plug; 75-watt lamp; raised lamp-house; two 100-foot metal reels; weight 4 lbs., 4 oz., packed individually one half dozen in corrugated carton.



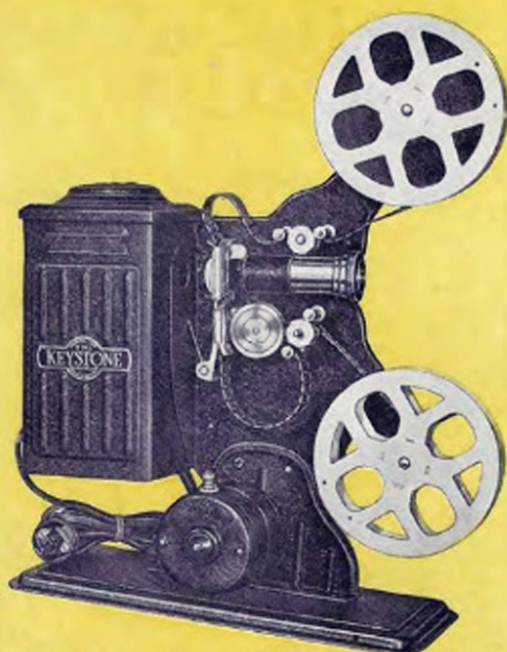
MODEL E-829 — A. C. Motor with Switch
200-foot Capacity — 16 M.M.

With A. C. motor, including switch, sprocket, two 100-foot metal reels; capacity 200-foot; 8-minute show; 125-watt lamp; fan cooled motor; flared end type lens; cord and plug; tilting device for angle projection; weight 6 lbs., 8 oz., packed individually one half dozen in corrugated carton.



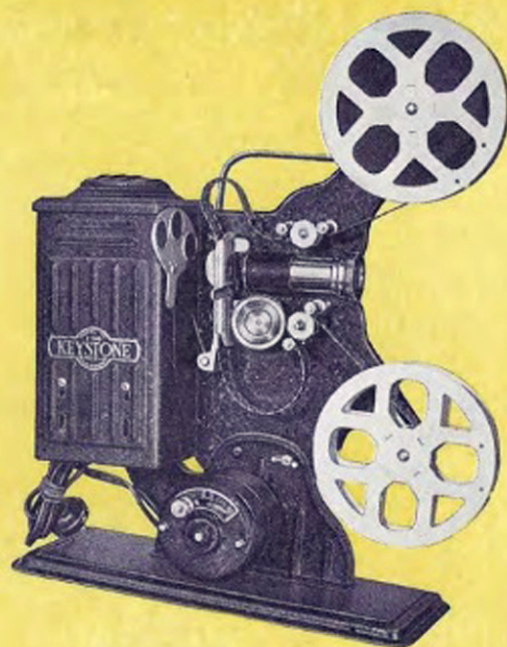
MODEL E-839 — 16 M.M. — Universal Motor —
A. C. or D. C. — 200-Foot Capacity —
8-minute Show

Universal motor; speed control; motor air cooled; concentrated filament 125-watt projection lamp; cord and plug; two 100-foot spools; tilting device for angle projection; weight 6 lbs., 8 oz. each; packed individually one half dozen in corrugated carton.



All
Models
on this
Page
Have
The

NO
LOST
BELT
Feature



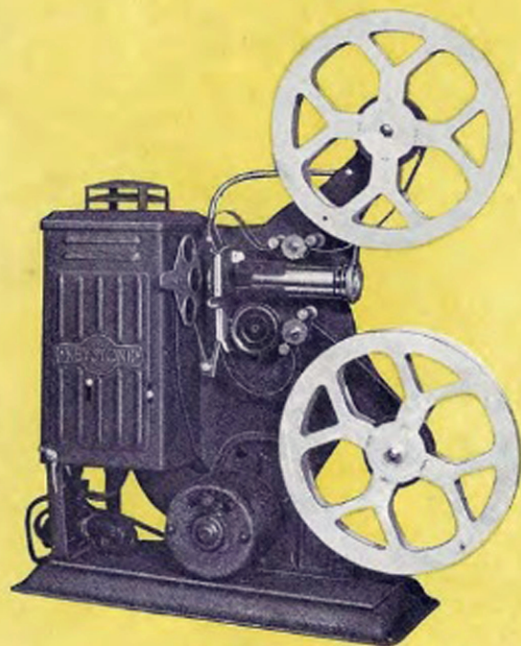
**MODEL E-743 — A. C. Motor — 15-minute Show
No Lost Belts — Switch in Motor — 16 M.M.**

With A. C. motor, including switch; two 200-foot metal reels; capacity 400-foot; 15-minute show; motor ventilated with fan; advance feed take-up sprockets; reflector; inner lamphouse casing to keep lamphouse cool; bell shaped flare lens; concentrated filament bulb with 135-watt rating; cord and plug; condenser lens; new base with swivel for angle projection; spring belt holders to prevent loss of belts; reflector; auxiliary hand crank; motor rewind to top spool. Weight 9 lbs. Packed individually one half dozen in corrugated carton.

NICKELED CARRYING HANDLE

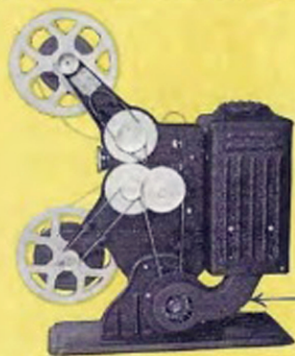
**MODEL E-848—Universal Motor—Forced Draft
Thru Lamphouse—Built in Speed Control—
No Lost Belts—3-Color Attachment—16 M.M.**

Universal motor; speed control built in motor; ventilating system from motor through to lamphouse; fan cooled motor; two 200-foot metal reels; capacity 400-foot; 15-minute show; advance feed take-up sprockets; reflector; three-color attachment; bell shaped flare lens; concentrated filament bulb with 135-watt rating; cord and plug; condenser lens; new base with swivel for angle projection with carrying handle; spring belt holders to prevent loss of belts; reflector; auxiliary hand crank; motor rewind to top spool; weight 8 lbs., 7 oz.; packed individually one half dozen in corrugated carton.



MODEL E-853

NICKELED CARRYING HANDLE



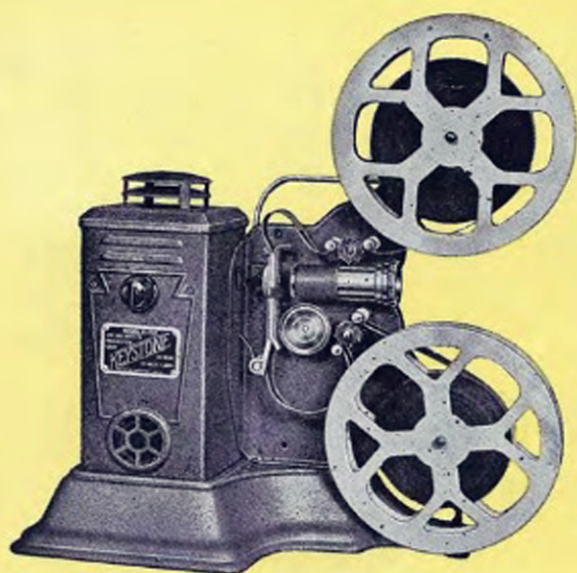
**Forced Draft Thru
Lamphouse
Models
E-853 — E-848**

**MODEL E-853 — More Brilliancy! — Tubular
Projection Bulb — Forced Ventilation Thru
Lamphouse — Built in Speed Control — No
Lost Belts — 3-Color Attachment — 16 M.M.**

Universal motor; speed control built in motor; air cooled motor; ventilating system from motor through to lamphouse; two 400-foot metal reels; capacity 400-foot; 15-minute show; advance feed and take-up sprockets; reflector; elevated base; lamphouse support; three-color attachment; cord and plug; condenser lens; new swivel base; with carrying handle and rubber tips; spring belt retainers to prevent loss of belts; 1" diameter projection lens; special tubular projection lamp 135-watt. Weight 9 lbs., 3 oz.; packed individually one half dozen in corrugated carton.

KEYSTONE "JUNIOR" MOVIE PROJECTORS

KEYSTONE
MADE IN BOSTON



NICKELED CARRYING HANDLE

MODEL D-759 — 16 M.M.

ENCLOSED GEAR FRAME
200-WATT TUBULAR BULB
CAST IRON BASE
BUILT-IN VENTILATION SYSTEM
SCREW TILT DEVICE
400-FOOT REELS

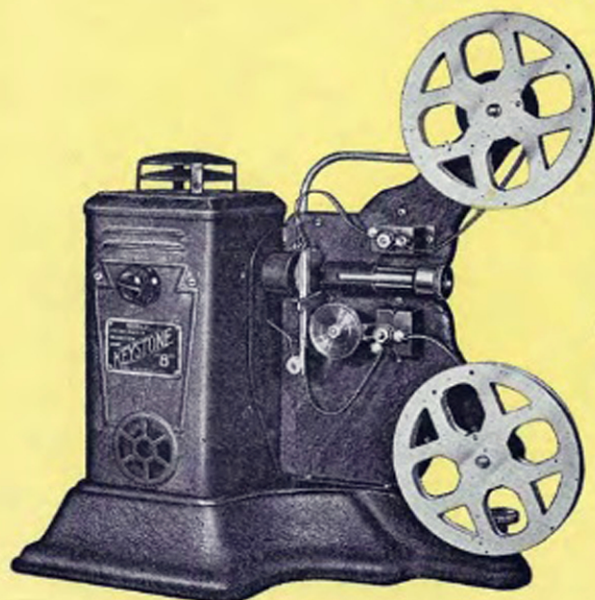
Universal motor; speed control; cast iron base; shutter; all gears on front frame enclosed; separate switch for lamp; 200-watt tubular projection lamp; motor built within lamp-house together with forced draft ventilating system; elevated base; cord and plug; condenser lens; carrying handle; spring belt retainers to prevent loss of belts; 1" diameter projection lens; two 400-foot metal reels; 15-minute show; advance feed and take-up sprockets; reflector; weight 12 lbs.; packed individually four in corrugated carton.

KEYSTONE 8 M. M. "JUNIOR" PROJECTORS

8 M.M. PROJECTORS WILL SHOW SMALLER PICTURES THAN 16 M.M. BUT THE FILM IS LESS EXPENSIVE.

There are 80 pictures 8 M.M. to the foot.

There are 40 pictures 16 M.M. to the foot.

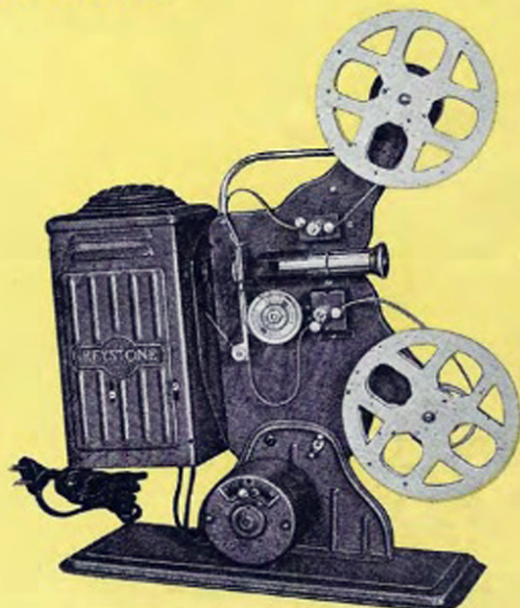


NICKELED CARRYING HANDLE

MODEL D-8

Universal motor; rheostat speed control; cast iron base; shutter; all gears on front frame enclosed; separate switch for lamp; 200-watt tubular projection lamp; motor built within lamp-house together with forced draft ventilation system; elevated base; cord and plug; condenser lens; spring belt retainers to prevent loss of belts; two 200-foot metal reels; 15-minute show; advance feed and take-up sprockets; reflector; weight 12 lbs.; packed individually.

8
M. M.
"JUNIOR"



NICKELED CARRYING HANDLE

MODEL E-8

Universal motor; rheostat speed control built in motor; two 200-foot metal reels; capacity 400-foot; 15-minute show; advance feed take-up sprockets; reflector; three-color attachment; bell shaped flare lens; concentrated filament bulb with 135-watt rating; cord and plug; condenser lens; new base with swivel for angle projection; spring belt holders to prevent loss of belts; reflector; auxiliary hand crank; motor rewind to top spool; carrying handle; weight 8 lbs., 7 oz.; packed individually one half dozen in corrugated carton.

ADULT MOVIE PROJECTORS AND CAMERAS

16 MILLIMETER—FOR SCHOOLS—CHURCHES—HOMES—COMMERCIAL USES



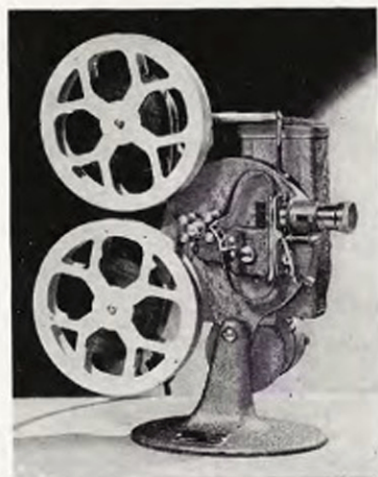
MODEL A-81 PROJECTOR

750-watt lamp. Universal Motor, 400-ft. capacity. Satisfactory auditorium projection. Forward and reverse. Rapid motor rewind. Pilot light. Die cast construction. Size of picture: 40" x 52" at a distance of 24 feet. \$69.50.



MODEL A-75 PROJECTOR

500-watt lamp. Universal Motor drive, F2.5 lens finely ground and polished. Capacity: 400-ft. Die cast construction. High speed rewind. Size of picture: 40" x 52" at a distance of twenty-four feet. \$55.00.



MODEL A-72 PROJECTOR

300-watt lamp. Universal Motor drive, F2.5 lens finely ground and polished. Capacity: 400-ft. Die cast construction. High speed rewind. Size of picture: 40" x 52" at a distance of twenty-four feet. \$44.50.



16 MILLIMETER MOVIE CAMERAS

Universal focus spring motor, three or seven speeds, daylight loading, beautifully finished, factory guarantee.

- A-3—Three Speeds with F3.5 Lens... \$35.00
- A-3—Three Speeds with F1.5 Lens... 71.00
- A-7—Seven Speeds with F2.7 Lens... 44.50
- A-7—Seven Speeds with F1.5 Lens... 71.00

8 MILLIMETER CAMERAS AND PROJECTORS

MODEL K-8 CAMERA — \$27.95

8 M.M., pocket size. Finish: bronzed grain. F3.5 Universal focus lens. Weight 1 lb. 12 oz. Interchangeable with F1.9 and F2.7 lenses as well as F3.5 — 1½" Telephoto Lens. Three speeds, normal, low and slow motion. Direct Vision View Finder. Visual Footage Indicator. Silent winding.



MODEL J-8 PROJECTOR \$39.50

Will project flickerless pictures. With 200-watt T-8 projection bulb and Achromatic Lens which assure sharp brilliancy. Capacity: 200-ft. 8 M.M. film, with motor rewind. Fan cooled ventilation. Sturdy construction. Fully guaranteed.

MODEL L-8 — 500-WATT..... \$55.00



KEYSTONE SLIDE PROJECTOR

MODEL S-25 — \$34.50

200-Watt Lamp. Patented Heat Absorbing Unit. Lens: F4.5 — 5" Wollensak. Glass Silvered Reflector. Three-piece Condenser Unit. Cooling Chamber. Automatic Locating. 2" x 2" Standard Slide Holder. Tilting Screws. Cast Base and Die Cast Lamphouse, equipped with cord, switch and plug. Size of Projector: 10½" x 7¾" x 9½" high. Weight: 8 lbs.

KEYSTONE 16 MILLIMETER MOVIE FILMS

KEYSTONE
MADE IN BOSTON

SEND FOR COMPLETE CATALOGUE OF FILMS



Mickey Mouse—100-Ft.—16 M.M.

- 901-A—Mickey's Barn Dance
- 902-A—Mickey's Finish
- 903-A—Mickey's Olympic Games
- 904-A—Mickey's Bicycle Race
- 905-A—Mickey's Barnyard Melodies
- 906-A—Mickey's Mad Dog
- 907-A—Mickey Goes Hunting
- 908-A—Mickey the Duck Hunter

Mickey Mouse—50-Ft.—16 M.M.

- 926-Z—Mickey's Musicians
- 927-Z—Mickey's Marathon
- 928-Z—Mickey's Jungle Pals
- 929-Z—Mickey's Best Girl
- 930-Z—Mickey's Turkey
- 931-Z—Mickey's Playmates
- 932-Z—Mickey the Castaway
- 933-Z—Mickey and the Gorilla

Mickey Mouse—25-Ft.—16 M.M.

- 951-Y—Mickey's Daffy Tunes
- 952-Y—Mickey's Narrow Escape
- 953-Y—Mickey's Wild Ducks
- 954-Y—Mickey's Birthday Cake
- 955-Y—Mickey's Boat Ride
- 956-Y—Mickey the Juggler
- 957-Y—Mickey's Banana Lunch
- 958-Y—Mickey to the Rescue

Mickey Mouse—10-Ft.—16 M.M.

- 976-X—Mickey's Comeback
- 977-X—Mickey's Rehearsal
- 978-X—Mickey the Band Leader
- 979-X—Mickey's Playful Musicians
- 980-X—Mickey Makes a Date
- 981-X—Mickey's Mishaps
- 982-X—Mickey's Surprise
- 983-X—Mickey's Party



Donald Duck—100-Ft.—16 M.M.

- 914-A—Donald Duck—The Ham Actor
- 915-A—Donald Duck—Getting the Hook

Donald Duck—50-Ft.—16 M.M.

- 938-Z—Donald Duck—Stage Struck
- 939-Z—Donald Duck—Busting Bubbles
- 940-Z—Donald Duck—Donald's Exit



Oswald Rabbit—100-Ft.—16 M.M.

- 1-A—Dog Team Race
- 4-A—Alaska Mush
- 5-A—Play Ball
- 6-A—The Duck's Birthday

Oswald Rabbit—50-Ft.—16 M.M.

- 27-Z—Kitchen Antics
- 28-Z—Home Run Oswald
- 29-Z—The Speed Cop
- 31-Z—House of Magic

Oswald Rabbit—25-Ft.—16 M.M.

- 51-Y—Oswald—In Alaska
- 52-Y—Oswald—The Barber
- 53-Y—Oswald—Snowed Under
- 54-Y—Oswald In Fairyland

Shirley Temple—100-Ft.—16 M.M.

- 1130—Shirley Temple—At Home

Shirley Temple—50-Ft.—16 M.M.

- 1120—Shirley Temple—At Home
- 1121—Shirley Temple—Bedtime

Shirley Temple—25-Ft.—16 M.M.

- 1101—Shirley Temple—At Home (Episode 1)
- 1102—Shirley Temple—At Home (Episode 2)
- 1103—Shirley Temple—Bedtime
- 1104—Shirley Temple—Herself



Charlie Chaplin—Charlie's Dream

Charlie Chaplin—200-Ft.—16 M.M.

- 2014—Charlie Chaplin—In Tough Luck
- 2015—Charlie Chaplin—In the Dumbell

Charlie Chaplin—100-Ft.—16 M.M.

- 1751—Charlie Chaplin—The Stolen Umbrella
- 52101—Charlie Chaplin—The Dentist
- 52102—Charlie Chaplin—Filling a Prescription
- 52103—Charlie Chaplin—Laughing Gas
- 5211—Charlie Chaplin—I am a King
- 5212—Charlie Chaplin—The Window Washer

Charlie Chaplin—50-Ft.—16 M.M.

- 1701—Charlie Chaplin—Skip the Puddles
- 1703—Charlie Chaplin—Ladies' Man
- 4211—Charlie Chaplin—Capturing the Robber
- 4212—Charlie Chaplin—The Mighty Hunter
- 4213—Charlie Chaplin—The Cave Man
- 4214—Charlie Chaplin—Assistance Wanted

Charlie Chaplin—25-Ft.—16 M.M.

- 16389—Charlie Chaplin—Free Samples at the Drug Store
- 16392—Charlie Chaplin—Making Friends
- 3211—Charlie Chaplin—Hoola-Hoola Dance
- 3212—Charlie Chaplin—The Janitor
- 3213—Charlie Chaplin—Back Stage
- 3214—Charlie Chaplin—The Scrapper

Charlie Chaplin—10-Ft.—16 M.M.

- 16366—Charlie Chaplin—The Rescue
- 16368—Charlie Chaplin—Charlie's Dream
- 16369—Charlie Chaplin—Saving Charlie
- 16372—Charlie Chaplin—Having Fun



Wm. S. Hart

Western—100-Ft.—16 M.M.

- 5317—Ken Maynard—Saving the Squatter
- 53106—William S. Hart—The Daring Rescue
- 5311—Tom Mix—Using His Brains
- 5313—Tom Mix—Who's the Boss

Western—50-Ft.—16 M.M.

- 4311—Tom Mix—The Hasty Exit
- 43101—Wm. S. Hart—The New Boss
- 4312—Tom Mix—Ransomed
- 4313—Tom Mix—Shootin' Up the Town

Western—25-Ft.—16 M.M.

- 16394—Wm. S. Hart—Rescuing the Girl
- 16406—Tom Mix—A Thrilling Movement
- 1629—Tom Mix—Fire Cracker Kid
- 1649—Tom Mix—The Escape

Western—10-Ft.—16 M.M.

- 16373—Wm. S. Hart—Himself
- 16376—Wm. S. Hart—The Outlaw Chief
- 16416—Wm. S. Hart—Two Gun Bill
- 16417—Wm. S. Hart—A Capture and Escape

MOVIE FILMS—16 M. M.

Travelogues—100-Ft.—16 M.M.

- 1801—Niagara Falls
- 1802—Cairo, Egypt
- 1803—Picturesque Japan
- 1804—Spain
- 1805—Turkey (Asia) and Constantinople
- 1806—Through Dauphine (France)
- 1807—Syria
- 1808—Ceylon—Devil Dancers and Buddhas
- 1809—Milan (Italy)
- 1810—Ruins of Egypt
- 1811—Hong-Kong and Canton, China
- 1812—City of Algier
- 1813—Venice (Italy)

Cartoon Comedy 200-Ft.—16 M.M.

- 2001—Bobby Bumps—On Fishing Trip
- 2005—Police Dogs—Turns Nurse
- 2007—Judge Rummy—A Fitting Gift
- 2008—Out of the Inkwell—Men of China
- 2010—Farmer Alfalfa—In New York

Cartoon Comedy 100-Ft.—16 M.M.

- 1760—Out of the Inkwell—Tantalizing Fly
- 1766—Goodrich Dirt—Coin Collector
- 1770—Hot Dog Series—Pete's Party
- 1773—Us Fellers—Dud, Circus Performer
- 1777—Farmer Alfalfa—Revenge
- 1778—Judge Rummy—Joy Rider
- 1783—Jerry on the Job—Tale of a Wag
- 1790—Bobby Bumps—On the Doughnut Trail
- 1791—Krazy Kat—Family Affair
- 5112—Mutt and Jeff—The Bull Fighter

Cartoon Comedy—50-Ft.—16 M.M.

- 1716—Jerry on the Job—The Candy Kid
- 4112—Krazy Kat—Best Mouse Loses
- 1721—Krazy Kat—The Great Cheese Robbery
- 1515—The Foxy Farmer
- 4114—Mutt and Jeff—The Champion
- 1727—Farmer Alfalfa—Sees New York
- 1728—Us Fellers—Old Swimming Hole
- 1729—Out of the Inkwell—Chinaman

Cartoon Comedy—25-Ft.—16 M.M.

- 3112—Krazy Kat—Kats is Kats
- 1550—Billy the Goat—"Whoopie"
- 3113—Bobby Bumps—On the Road
- 3116—Jerry on the Job—Monkey Business
- 3118—Judge Rummy—On with the Dance
- 3119—Out of the Inkwell—Kangaroo
- 3121—Us Fellers—Dud Makes a Home Run
- 3122—Goodrich Dirt—The Cop

Cartoon Comedy—10-Ft.—16 M.M.

- 21101—Krazy Kat—Beamed with a Brick
- 21102—Bobby Bumps—Chased by the Sultan
- 21103—Jerry on the Job—The Cat Drops Out

KEYSTONE 8 M. M. MOVIE FILMS

Donald Duck—50-Ft.—8 M.M.

- M914-A—Donald Duck—The Ham Actor
- M915-A—Donald Duck—Getting the Hook

Donald Duck—25-Ft.—8 M.M.

- M938-Z—Donald Duck—Stage Struck
- M939-Z—Donald Duck—Busting Bubbles
- M940-Z—Donald Duck—Donald's Exit

Oswald Rabbit—50-Ft.—8 M.M.

- M 1-A—Dog Team Race
- M 4-A—Alaska Mush
- M 5-A—Play Ball
- M 6-A—The Duck's Birthday

Oswald Rabbit—25-Ft.—8 M.M.

- M27-Z—Kitchen Antics
- M28-Z—Home Run Oswald
- M29-Z—The Speed Cop

Mickey Mouse—50-Ft.—8 M.M.

- M901-A—Mickey's Barn Dance
- M902-A—Mickey's Finish
- M903-A—Mickey's Olympic Games
- M904-A—Mickey's Bicycle Race

Mickey Mouse—25-Ft.—8 M.M.

- M926-Z—Mickey's Musicians
- M927-Z—Mickey's Marathon
- M928-Z—Mickey's Jungle Pals
- M929-Z—Mickey's Best Girl

Cartoon Comedy—100-Ft.—8 M.M.

- M 2001—Bobby Bumps—On Fishing Trip
- M 2005—Police Dogs—Turns Nurse
- M 2007—Judge Rummy—A Fitting Gift
- M 2008—Out of the Inkwell—Men of China
- M 2010—Farmer Alfalfa—In New York

Charlie Chaplin—100-Ft.—8 M.M.

- M 2014—Charlie Chaplin—In Tough Luck
- M 2015—Charlie Chaplin—In the Dumbell

Charlie Chaplin—50-Ft.—8 M.M.

- M 1751—Charlie Chaplin—The Stolen Umbrella
- M 5211—Charlie Chaplin—I am a King
- M 5212—Charlie Chaplin—The Window Washer
- M 5213—Charlie Chaplin—The Property Man

Western—50-Ft.—8 M.M.

- M53106—Wm. S. Hart—The Daring Rescue
- M 5311—Tom Mix—Using His Brains
- M 5317—Ken Maynard—Saving the Squatter
- M 5318—Wild West—In the Nick of Time

Travelogues—50-Ft. 8 M.M.

- M 1801—Niagara Falls
- M 1802—Cairo, Egypt
- M 1803—Picturesque Japan
- M 1804—Spain
- M 1805—Turkey (Asia) and Constantinople

Cartoon Comedy—50-Ft. 8 M.M.

- M 1760—Out of the Inkwell—Tantalizing Fly
- M 1766—Goodrich Dirt—Coin Collector
- M 1772—Hot Dog Series—Dog Gone It
- M 1782—Jerry on the Job—Without Coal
- M 1789—Bobby Bumps—Surf Rider
- M 1791—Krazy Kat—Family Affair

Miscellaneous—50-Ft.—8 M.M.

- M16178—Nature Study—The Birth of a Bean
- M16179—Nature Study—Marvels of a Trained Fly
- M16175—U. S. Navy—Air Fleet in Action
- M16176—U. S. Navy—Battleships Attack Enemy

Shirley Temple—50-Ft.—8 M.M.

- M 1130—Shirley Temple—At Home

Charlie Chaplin—25-Ft.—8 M.M.

- M 1701—Charlie Chaplin—Skip the Puddles
- M 1703—Charlie Chaplin—Ladies' Man
- M 4211—Charlie Chaplin—Capturing the Robber
- M 4212—Charlie Chaplin—The Mighty Hunter
- M 4218—Charlie Chaplin—Under Arrest

Western—25-Ft.—8 M.M.

- M43101—Wm. S. Hart—The New Boss
- M 4311—Tom Mix—The Hasty Exit
- M 4312—Tom Mix—Ransomed

Cartoon Comedy—25-Ft.—8 M.M.

- M 1716—Jerry on the Job—The Candy Kid
- M 4112—Krazy Kat—Best Mouse Loses
- M 4114—Mutt and Jeff—The Champion
- M 1729—Out of the Inkwell—Chinaman

Gang Comedy—25-Ft.—8 M.M.

- M 4611—McDougall Alley Gang—Yankee Doodle

Shirley Temple—25-Ft.—8 M.M.

- M 1120—Shirley Temple—At Home
- M 1121—Shirley Temple—Bedtime

Jack Dempsey—25-Ft.—8 M.M.

- M 1732—Jack Dempsey—Series 1-2
- M 1733—Jack Dempsey—Series 3-4
- M 1734—Jack Dempsey—Series 5-6

RADIOPTICANS AND MOVIE ACCESSORIES

KEYSTONE
MADE IN BOSTON

FOR PROJECTION OF POSTCARDS — SNAPSHOTS — COLOR PICTURES, ETC.



NO. 421 RADIOPTICAN — Price \$8.50

Because of its superior lenses and illuminants this model yields a sharper and brighter picture. **LENS SYSTEM:** Double Plano-Convex Lens System. **ILLUMINATION:** 6 ft. of cord for attaching to any electric light fixture. **SOCKETS** for two bulbs. **PICTURE HOLDERS:** Two holders for standard post cards, etc., are mounted on detachable sliding backs with adjustable holders for pictures up to 6½ inches x 5½ inches (patented) eliminating delay between subjects and preventing light being let into room when loading. **COOLING ARRANGEMENTS:** Thoroughly ventilated and protected with air spaces. **FINISH:** Highly baked brown enamel shrivel finish. Sample Cards with each machine.



NO. 411 RADIOPTICAN

Price \$5.00

Equipped with 3½-inch double convex ground and polished lens, two ventilators to keep the housing cool, electric cord, plug, sockets for two bulbs inside body. It is strikingly finished in baked black crystal enamel. **SIZE:** Length 9¾ in., width 11 in., height 12 in. Sample Card with each machine.



**PICTOGRAPH
MODEL 441 — \$16.50**

Front Surface Mirrors for accurate optical reflection. 2 Tubular 135-Watt Projection Bulbs. Picture Holder with adjustable guides for pictures up to 4¾" x 5½". Has Ventilation Provision. Projects 48-inch pictures. Carrying Handle. Crystal Bronze Finish. Size 11½" x 10½" x 11¼" high. 3½" Double Element Projection Lens.

JUNIOR PROJECTOR MOVIE ACCESSORIES

NO. 604 — KEYSTONE SCREEN



Made of Masonite surfaced with special aluminum preparation. In wood frame. Size: 22" x 16". Has swivel pieces at the base so that the screen will stand. Each packed in corrugated carton, weight when packed for shipment 3½ lbs.

NO. 607 — KEYSTONE SCREEN

Size 32" x 27" otherwise same as above.

NO. 710 — FILM SPLICER



For mending film breaks, equipped with film cement and simple instructions. Packed small cardboard box.



400' Reel

EXTRA SPOOLS

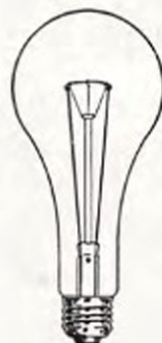
400-foot steel spool	\$.40 List
400-foot aluminum spool60 List
200-foot spool35 List
100-foot spool20 List
50-foot spool15 List



KEYSTONE FILM CEMENT

Keystone Film Cement was especially developed for the splicing of safety film. It contains the highest quality chemicals and is furnished in ½-ounce or 1-ounce bottles.

½-ounce Bottle	\$.20 List
1-ounce Bottle35 List



NO. P960 BULB

NO. P960 — BULB

Ordinary house bulbs will not give a good picture in any Projector. Only a clear lamp with concentrated filament and of the proper height that will reflect directly through the lens will give a clear picture under otherwise normal conditions.

When purchasing lamps the best lamp for toy projectors is our No. P960, 30c each For E-853.....No. 1060, 50c each



KEYSTONE MANUFACTURING COMPANY

288 A STREET

BOSTON, MASS.

NEW YORK SHOWROOM

200 FIFTH AVENUE

13-38A-636

PRINTED IN U.S.A