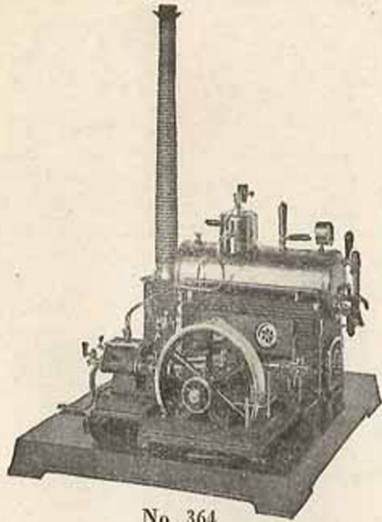


CHRISTMAS 1929



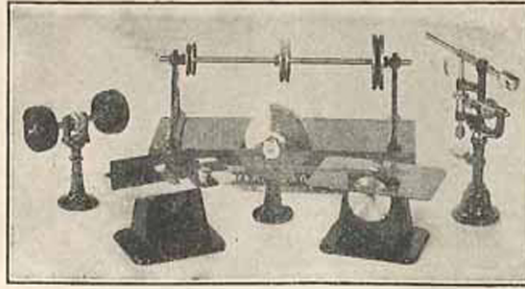
F. A. O. SCHWARZ



No. 364

STEAM ENGINES

Finest horizontal style steam engines made, have double cylinder, steel blue brass boiler with water-gauge, manometer, self-feeding pump; all parts made of best material. In three sizes:
 No. 364/1—11x13 in. base, 16 in. high.....\$25.00
 No. 364/2—11½x13 in. base, 19½ in. high.... 32.00
 No. 364/3—15x17 in. base, 23 in. high..... 45.00



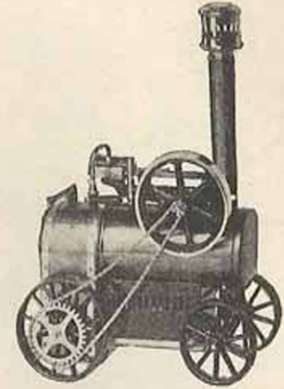
ATTACHMENT

To be used in connection with steam engines; large variety of very fine heavy models, such as:

- Polishing Wheel.....\$1.25
- Plane..... 1.75
- Circular Saws..... 1.75, 2.25
- Jig Saws..... 3.00
- Lathes..... 6.50
- Drills..... 2.50, 4.75
- Grindstones..... 1.50, 2.00
- Feed Pump with rubber tubing..... 5.00
- Wire-Belting to connect attachments with shafting or engine, per yard.....\$0.30

SHAFTINGS

In different heights and lengths with 4, 6 or 8 wheels.....\$2.50, \$3.75, \$4.00, \$7.50



LOCOMOBILES

Driven by steam, can be used as stationary engine by disconnecting chain, with water-gauge and attachment to shut off steam, etc.

No. 502/3—8½ in. long, 12 in. high..... \$15.00

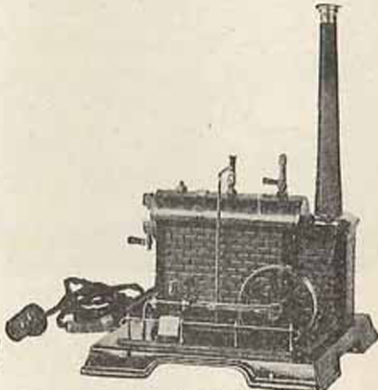
Horizontal Steam Engines, connected with dynamos producing current to light low voltage toy lamps:

No. 4136/6/91—base 10½ x 11 inches.....\$25.00

No. 4146/7/91—
—as (illustrated) base 13 x 13½ inches.....\$45.00



No. 4117/7

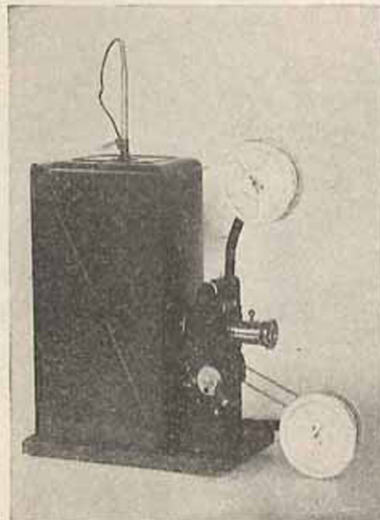


No. 4136/6 EL

STEAM ENGINES

With fine brass boiler and steam whistle:
 No. 4117/7—13 inches high.....\$13.50
 Upright steam engine, heated by electricity:
 No. 4117/8 EL—14 in. high.....\$20.00
 Heated by electricity.
 (Can be connected direct to house current).
 No. 4136/6 EL—as illustrated, size 12 x 12 in.; beautifully finished in every detail.....\$22.50
 No. 4136/6/91 EL—Same with dynamo producing current to light low voltage toy lamps.....\$30.00

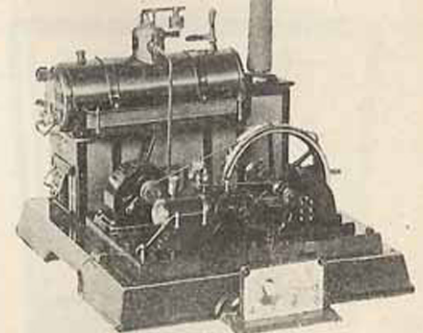
**Steam Engines
Picture Machines**



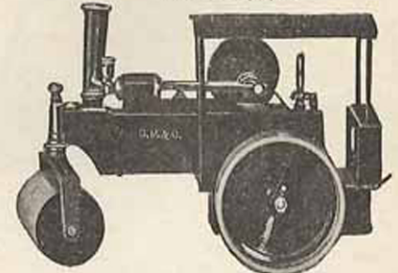
MOVING PICTURE MACHINES

All machines are equipped for electric light, to be connected with house current. A special bulb is supplied with every model. Strong lenses. Every machine has a rewinder. Films are included with each machine.

Made in three sizes.....\$15.00, \$20.00, \$26.50
 Extra films (Charlie Chaplin, William S. Hart, Tom Mix) 10 feet, \$0.85; 25 feet, \$2.00, 50 feet.....\$4.00
 Extra films (weekly news) in lengths from 75 to 200 feet. Per ft.....\$0.04

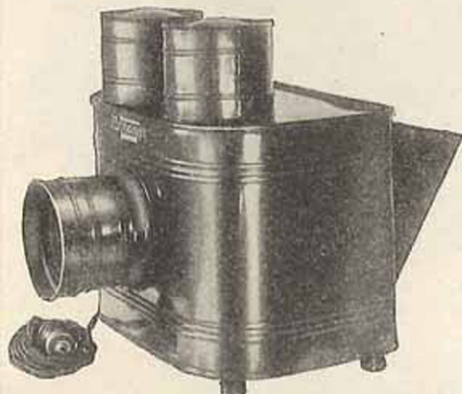


No. 4146/7/91



STEAM ROLLER

Run by steam, forward or backward:
 No. 4084—10½ in. long, 6½ in. high.....\$13.50
 No. 504—12 in. long, 8 in. high..... 15.00



**MIRROSCOPES
POSTCARD AND PHOTOGRAPH
PROJECTORS**

With electric light.....\$6.00, \$10.00, \$15.00, \$20.00



CAMERA MAGIC LANTERN

No. 144E—The strong electric light, supplied by standard flashlight battery, throws an excellent image on any white surface. Metal lantern and tripod base measuring 8 inches high. Twelve colored slides with four pictures on each included.....\$2.50