
FILMS FOR THE "KID"

Your Home Cinema is perfectly safe because all Pathéscope films are guaranteed non-inflammable. There are hundreds of subjects to choose from in the Pathéscope Film Catalogue (price 6d.) but here are a few special ones at the special price of 2/6 per reel, which will be of interest to "Kid" users.

NATURAL HISTORY

- 13. The Ferret.
- 54. The Sensitive Plant.
- 62. Jelly Fish.
- 640. The Death's Head Hawk Moth.

INDUSTRY & ART

- 297. A Biscuit Factory.
- 442. Straw Hat Making in Fiesole
- 518. Mussel Farming.
- 588. Safety Razor Making.
- 1015. Porcelain Making at Sèvres.

TRAVEL

- 390. Châteaux of the Loire.
- 417. Lerida—A Spanish Fortress.
- 493. St. Malo—The Ancient Corsair City.
- 1012. An Alpine Glacier.

COMEDY

- 379. Serpentine and His Model.
- 628. Too Clever a Dog.
- 678. Becassotte at the Sea Side.
- 684. John Chinaman and His Articulate Moke.

and many others in the "K" section of our illustrated Film Catalogue.

Also hundreds of others fully described in the Catalogue at 3/6 and 6/- per reel.

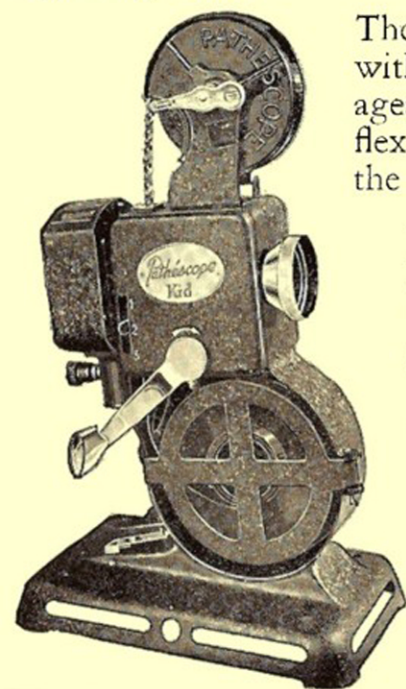
PATHÉSCOPE LTD., 5, LISLE ST., LONDON, W.C.2.



Uses Safety Film

THE PATHÉSCOPE "KID" PROJECTOR AND ACCESSORIES

A delightful little apparatus for showing Home Movies, so skilfully designed that it is the simplest, smallest and hardiest cinema projector ever made, the Pathéscope "Kid" is quite new and has not its equal anywhere.

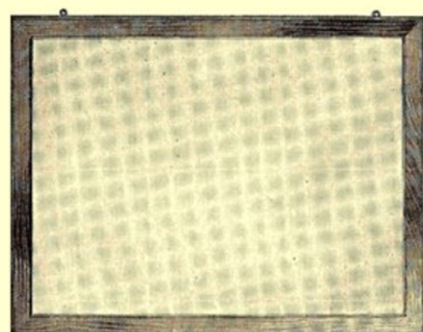


The "Kid" is supplied complete with resistance (to suit all voltages), one twelve-volt lamp and flex and plug for connecting to the electric light socket.

The lamp is lit from the house electric supply (through the resistance supplied) or direct from a 12-volt or 6-volt battery or accumulator. All the "operator" has to do when he has threaded the film according to the simple instructions given with the machine is to turn the handle and beautifully illuminated

pictures appear on a screen about two or three feet wide. Your drawing-room can thus be made into a real cinema by merely putting out the light.

55/- THE "KID'S" PRICE IS **55/-**
ABSOLUTELY UNPRECEDENTED



THE "K" RIGID SCREEN

The "K" screen is specially intended for use with the "Kid" Projector because the smaller the surface the sharper and more brilliant the picture. It measures 24in. by 18in., is built of

strong board with a beautifully silvered surface and has a neat dark wood frame. Suspension rings are fixed ready for hanging the screen on the wall.

Price 7/6 Ref. No. K. 1.

LAMPS

12-volt (gasfilled) lamps for use when connected to electric light mains or 12-volt batteries. Price (per box of three) 10/-
Ref. No. B.P. 109.

12-volt Type C lamps (gasfilled) with a double-wound filament which gives increased illumination.
Price (per box of two) 7/3.
Ref. No. B.P. 152.

6-volt (gasfilled) lamps for use with 6-volt batteries or accumulators.
Price (per box of three) 10/-
Ref. No. B.P. 123.

SPECIAL OIL

Strongly recommended for use on the "Kid" Projector as it cannot clog the mechanism. Price 1/- per bottle.
Ref. No. P. 128.

