

F.A.O. SCHWARZ

NEW YORK ARDMORE BOSTON



SANTA
CLAUS

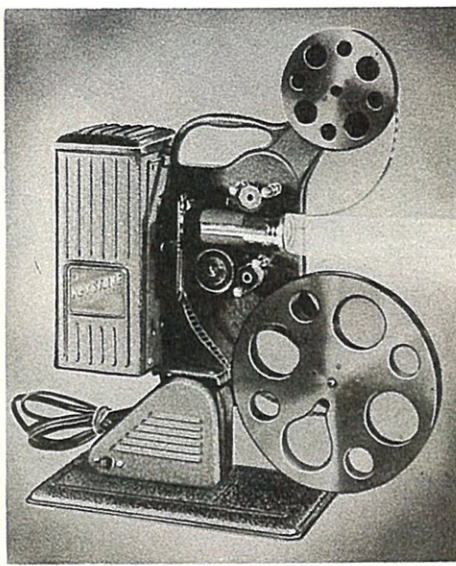
Green

KEYSTONE MOVIEGRAPH PROJECTORS

To perpetuate action scenes of family life, travel or sport, movies are indispensable. Hence these "Moviegraph Projectors" are the source of much pleasure in the home. With them, amateur operators can delight groups of all ages. Even 4-year-olds will enjoy watching, and children of 8 learn how to operate these machines. Any white surface will serve for a screen, a blacked-out room for the place. The further from the screen the projector is, the larger the picture image; the nearer the screen the sharper and brighter the image. Do not be misled by the inexpensiveness of these projectors; they perform well.

A 11-6 KEYSTONE MOVIEGRAPH PROJECTOR\$24.95

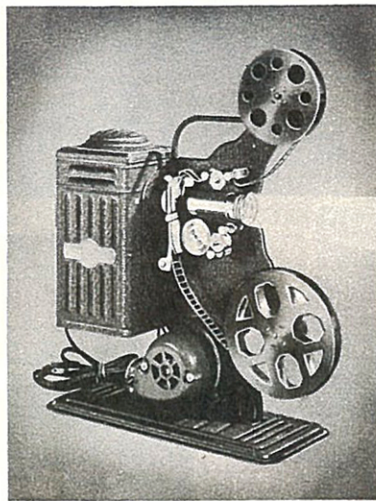
(8 yrs. up)—This model has tubular projection lamp, 140-watt bulb, AC 115 volt 60 cycle motor, electric film rewind, simplified threading, 400 ft. reel for 16 mm film. Ship. wt. 10 lbs.



(A)

B 11-1 KEYSTONE MOVIEGRAPH PROJECTOR\$18.50

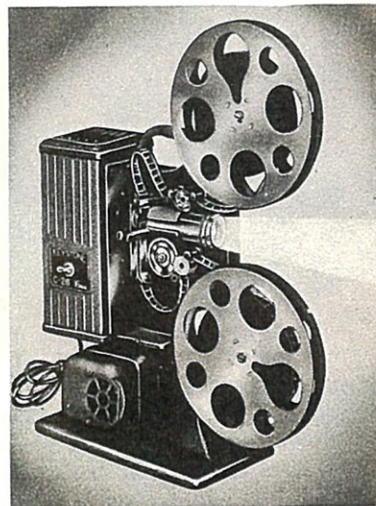
(8 yrs. up)—Equipped with AC 115-volt 60 cycle motor, 120-watt bulb, electric film rewind, simplified threading, 200 ft. reel, but machine may be equipped for 400 ft. capacity. Ship. wt. 10 lbs.



(B)

C 11-20 KEYSTONE MOVIEGRAPH PROJECTOR\$35.00

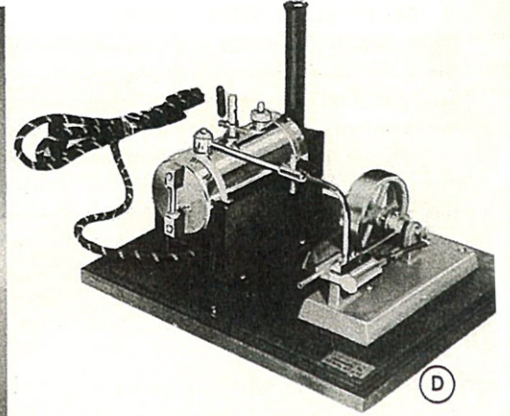
(8 yrs. up)—Here is a deluxe machine with features and precision details usually found only in finer projector equipment. F2.8 projection lens, 200-watt lamp, AC 115-volt 60 cycle motor, with forced draft ventilation, separate switch for lamp, electric film rewind, simplified threading, 400 ft. reel for 16 mm films. Ship. wt. 17 lbs.



(C)

D 10-39 STEAM ENGINE\$20.00

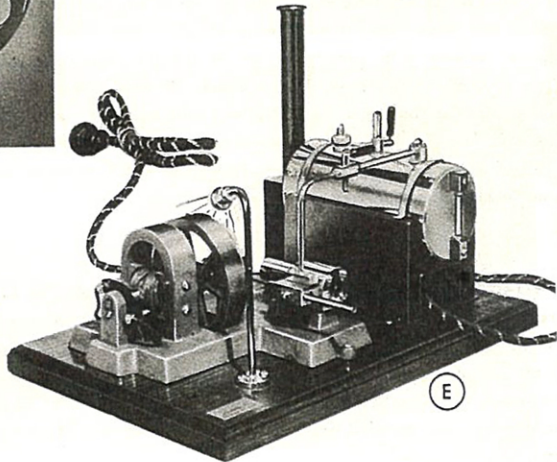
(8 yrs. up)—Designed like "real" power plants, operates on 110 volts AC or DC current. Boiler diameter is 2 1/2" by 5" long, mounted on steel fire box. Heavy cast iron flywheel. Base measures 9 x 11". Ship. wt. 7 lbs.



(D)

E 11-35 MODEL POWER PLANT.....\$45.00

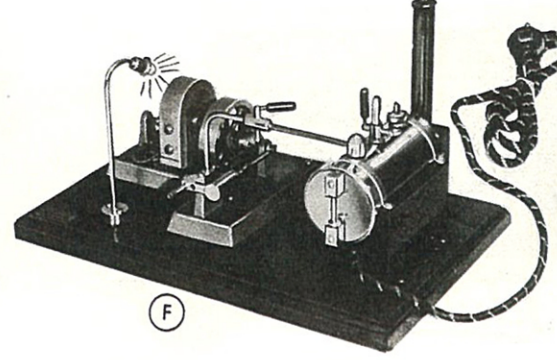
(8 yrs. up)—Traces transformation of heat to electrical energy! Unit consists of boiler, steam engine, generator and light post. Of exceptional educational and play value. Sturdily made with great technical competence. On base 10 x 15". AC or DC current. Ship. wt. 14 lbs.



(E)

F 10-40 MASTER STEAM ENGINE.....\$27.00

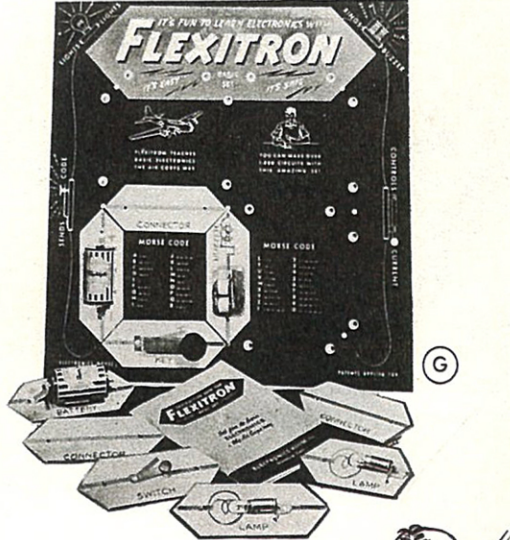
(8 yrs. up)—Double wheels and pistons, boiler has 36 ounce capacity. Electrically (AC or DC) heated, mounted on base 7 x 11". Flywheel and belting can be attached to other toys to make them "action" toys. Ship. wt. 11 lbs.



(F)

G 11-41 FLEXITRON\$3.95

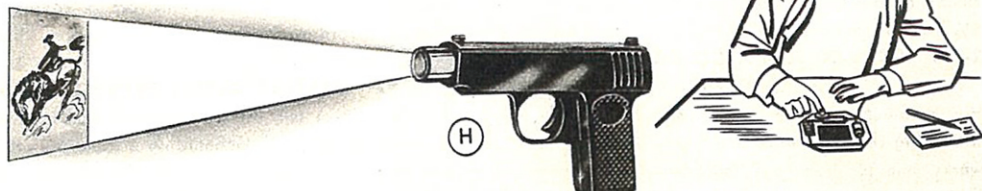
(7 yrs. up)—The safe, easy and interesting way to learn basic electricity—by doing. This board, 16 x 16", allows the young Edison to build over 1000 operating circuits, with no soldering or wiring. Impressive instrument panel, switches, buzzers, connectors, keys. Exciting "secret" telegraph and blinker codes are easy! Ship. wt. 4 lbs.



(G)

H 2-130 AUTOMAGIC PICTURE GUN.....\$2.95

(4 yrs. up)—Any one of the several amusing pictures may be "shot" to the wall or to any light and flat surface. With every pull of the trigger, another picture of the story and a caption is revealed in full detail. Film is placed in the 5" black metal "gun"—the battery light and gun do the rest. Ship. wt. 2 lbs.



(H)